

EG-Baumusterprüfbescheinigung

gemäß Richtlinie 95/16/EG (Aufzüge)

Certificate of EC-Type examination

according to the Directive 95/16/EC (Lifts)

Name der zugelassenen Stelle:
*Name of the approved body:***TÜV AUSTRIA SERVICES GMBH**
Krugerstraße 16
A-1015 Wien
ID-Nr.: 0408**Nummer der Baumusterprüfung:**
*Number of type examination:***TÜV-A-AT-1/00/016 CETV/2**

1. Art, Kategorie, Typ und Fabrik- oder Handelsmarke:
Category, type and make or trade name:

Verriegelungseinrichtung für waagrecht bewegte Schacht-Schiebetüren Type AMDL1-R2-EN
Locking device for horizontally sliding landing doors type AMDL1-R2-EN

2. Name und Anschrift des Herstellers:
Manufacturer's name and address:

WITTUR GesmbH
Sowitschstraße 1
A-3270 Scheibbs
AUSTRIA

3. Name und Anschrift des Inhabers der Bescheinigung:
Name and address of certificate holder:

KONE Corporation
Kartanontie 1
FIN-00330 Helsinki
FINLAND

4. Datum der Vorlage zur Zertifizierung:
Date of submission for certification:

22.03.2010

5. Aufgrund folgender Vorschrift ausgestellte Bescheinigung:
Certificate issued on the basis of the following requirement:

Richtlinie 95/16/EG (Aufzüge)
*Directive 95/16/EC (Lifts)*Auszugsweise Vervielfältigung nur mit Genehmigung der TÜV AUSTRIA SERVICES GMBH gestattet
Duplication of this document in parts is subject to the approval TÜV AUSTRIA SERVICES GMBH

6. Prüfstelle:
Test laboratory:
- TÜV AUSTRIA SERVICES GMBH
Krugerstraße 16
A-1015 Wien
7. Datum und Nummer des Prüfprotokolls:
Date and number of laboratory report:
- AT1-TV-01/02 vom / dated 31.01.2001
2004-AT-SP/035 vom / dated 15.10.2004
8. Datum der Prüfung:
Date of examination:
-
- 15.10.2004
9. Folgende, mit der Bescheinigungsnummer gekennzeichnete Unterlagen sind dieser Bescheinigung beigelegt:
Following documents, indicated with the certificate number are annexed to this certificate:
- Schachttürkämpfer komplett
AMD L 1C - R2
Zeichnungs-Nr.: 601006 Ausgabe M Datum 16.03.2010
 - Basis Schachttürschloß
Standart - centre opening type
Zeichnungs-Nr.: 601029 Ausgabe M Datum 21.09.2009
 - Basis Schachttürschloß
DOM - Option for centre opening type
Zeichnungs-Nr.: 601023 Ausgabe N Datum 21.09.2009
 - Notentriegelung
Zeichnungs-Nr.: 601080 Ausgabe C Datum 31.05.2007
 - RENOVA 400 / 600 / 800
AMD L 1 - R2
Zeichnungs-Nr.: 602819 Ausgabe B Datum 02.08.2006

10. Zusätzliche Angaben:
Additional information:

- Art und Verwendungsbereich des Türverschlusses
Type and scope of use of the door locking device

Verriegelungseinrichtung, Typ AMDL1-R2-EN, mit Hakenriegel für waagrecht bewegte, mittig öffnende, zwei-blättrige Schacht-Schiebetüren mit maschineller Betätigung
Door locking device type AMDL1-R2-EN with lock hook for horizontally moving, centre opening, two panel power operated landing sliding door

- Zulässige Türabmessungen
Allowed door measurements

Lichte Türbreite door width	Lichte Türhöhe door height	Max. Masse eines Türblattes Max. mass single door panel
700 - 1500 mm	1900 – 3000 mm	125 kg

- Nennwerte der elektrischen Sicherheitseinrichtungen
Nominal value of the electrical safety components

Wechselstrom 230 V/2A
Alternating current

- Die Schachttürverriegelung kann als Ersatz für Schachttürverriegelungen mit folgenden Zertifikatsnummern verwendet werden:
The locking device for landing doors can be used as replacement for locking devices with following license numbers:

TÜV-A-AT-1/00/016 CETV
TÜV-A-AT-1/00/016 CETV/1

11. Diese Bescheinigung darf nur im Ganzen mit den Unterlagen nach Pkt. 9 verbreitet werden.
Spread of this certificate allowed just complete together with documents according point 9.

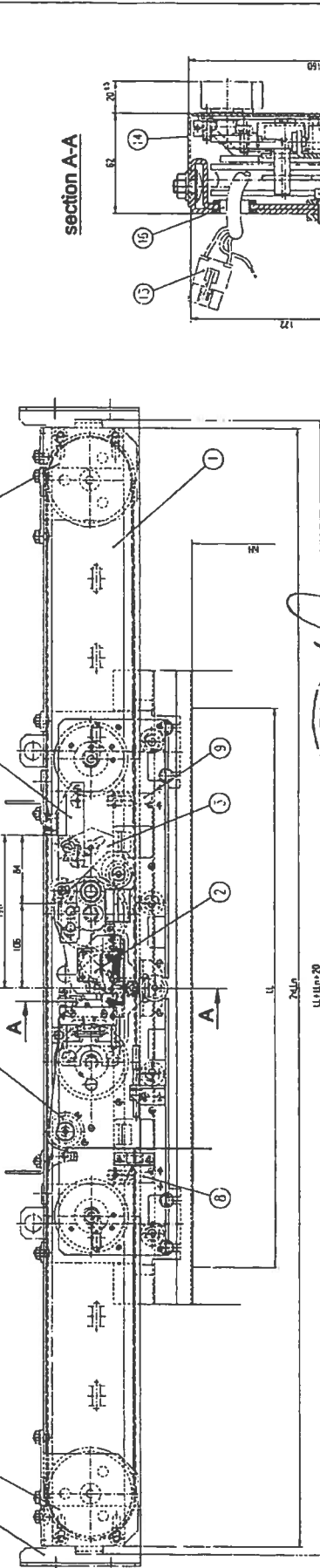
19.06.2010
Ausstellungsdatum
Date of issue



Ing. Stephan STÖRMER
Leiter der Prüfstelle
Head of examination & testing

DI Gottfried JUNG
Certifying Department

50-03.12.010	50-03.12.010
U	VIA: Vienna Austria
V	VIA: Vienna Austria
K	VIA: Vienna Austria
L	VIA: Vienna Austria
M	VIA: Vienna Austria
N	VIA: Vienna Austria



TUV AUSTRIA SERVICE GMBH
 Benannte Stelle
 0408
 TUV
 TUU-A-AT-1001016 cert.
 AA.6.2010

Table 1: CHARACTERISTICS

OPT	LL	VAR 03	VAR 04
3 FULL COVER	60150	60150	60150
0 No options	60150	60150	60150

Product Description: 50-03.12.010
 Order Form: RM/AM/L/RALING

Table 2: LL

LL	1500
115-1199	1150
100-1150	1000
85-1000	850
70-850	700
55-700	550
40-550	400
25-400	250
10-250	100

Table 3: LANDING DOOR LOCK

4 [14] (No-oh)	1100-1150	1100	1100
3 AS 175.2	1100-1150	1100	1100
1 [14]	1100-1150	1100	1100

Table 4: FIDING

4 [14] (No-oh)	1100-1150	1100	1100
3 AS 175.2	1100-1150	1100	1100
1 [14]	1100-1150	1100	1100

Table 5: DOOR CONTACT CABLE

4 [14] (No-oh)	1100-1150	1100	1100
3 AS 175.2	1100-1150	1100	1100
1 [14]	1100-1150	1100	1100

Table 6: SUPERVISION SWITCH

4 [14] (No-oh)	1100-1150	1100	1100
3 AS 175.2	1100-1150	1100	1100
1 [14]	1100-1150	1100	1100

Table 7: CLOSING DEVICE

4 [14] (No-oh)	1100-1150	1100	1100
3 AS 175.2	1100-1150	1100	1100
1 [14]	1100-1150	1100	1100

Table 8: CLOSING DEVICE

4 [14] (No-oh)	1100-1150	1100	1100
3 AS 175.2	1100-1150	1100	1100
1 [14]	1100-1150	1100	1100

Table 9: SUPPORT

4 [14] (No-oh)	1100-1150	1100	1100
3 AS 175.2	1100-1150	1100	1100
1 [14]	1100-1150	1100	1100

Table 10: FULL COVER

4 [14] (No-oh)	1100-1150	1100	1100
3 AS 175.2	1100-1150	1100	1100
1 [14]	1100-1150	1100	1100

Table 11: SUPERVISION SWITCH

4 [14] (No-oh)	1100-1150	1100	1100
3 AS 175.2	1100-1150	1100	1100
1 [14]	1100-1150	1100	1100

Table 12: SUPPORT

4 [14] (No-oh)	1100-1150	1100	1100
3 AS 175.2	1100-1150	1100	1100
1 [14]	1100-1150	1100	1100

Table 13: FULL COVER

4 [14] (No-oh)	1100-1150	1100	1100
3 AS 175.2	1100-1150	1100	1100
1 [14]	1100-1150	1100	1100

Table 14: SUPERVISION SWITCH

4 [14] (No-oh)	1100-1150	1100	1100
3 AS 175.2	1100-1150	1100	1100
1 [14]	1100-1150	1100	1100

*) 171: extra mesh head, standard (1411-71) not covered by pat.

Position/Bezugsgruppe ohne Abblättern: 1 15 17 18

Position/Bezugsgruppe ohne Abblättern: 1 15 17 18

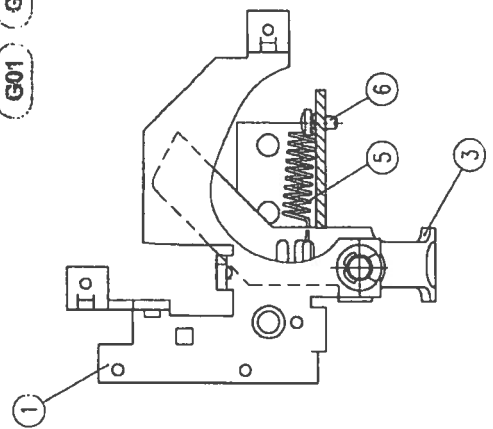
Position/Bezugsgruppe ohne Abblättern: 1 15 17 18

Position/Bezugsgruppe ohne Abblättern: 1 15 17 18

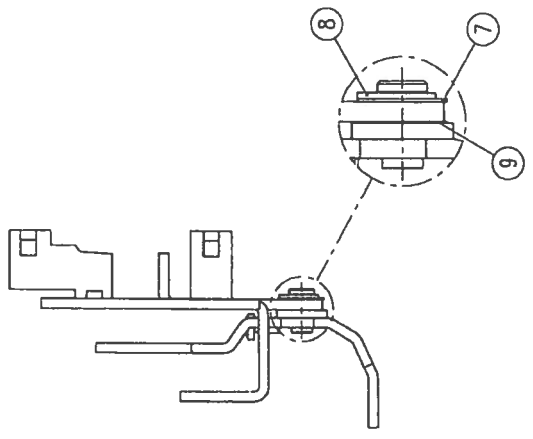
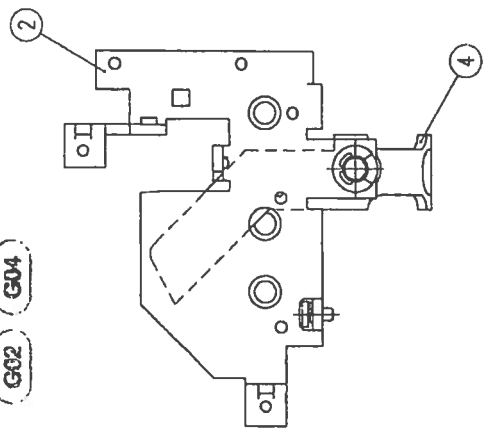
Position/Bezugsgruppe ohne Abblättern: 1 15 17 18

part no.	601000	601005	601006	601007	601010
part name	601014	601550	602935	602945	602949
part name	603/604 added, drawing updated	GRW-2257	JI 05300	notic	
part name	603/604 added, drawing updated	GRW-2257	JI 05300	notic	

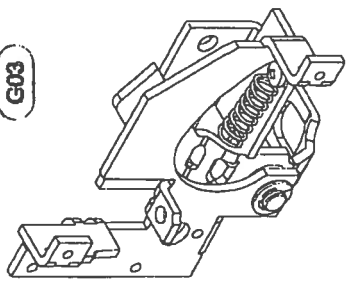
G01 G03



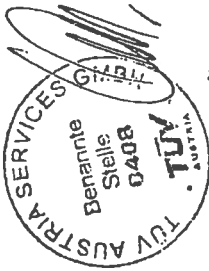
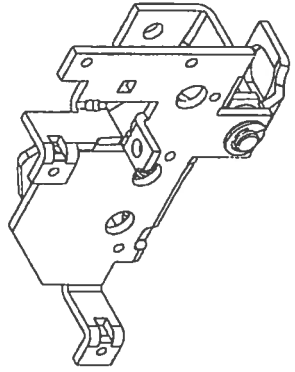
G02 G04



G03



G04



19.6.2010

TÜV-A-AT-1/001016 CETV 1/2

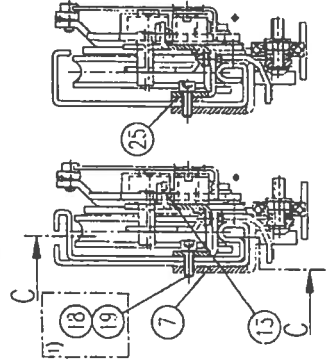
H08	258667	spring washer DIN9135	0 MB
H08	247125	retaining washer 1. shell DIN6799-7	
H07	252374	locking disk DIN 988-B1/4x0.5	
H06	268113	thread roll. scr.lock DIN7500-C-M4x8-8.8-APC	
H05	605066	tension spring	
H04	601081	lever	
H03	601081	lever	
H02	601073	locking notch	
H01	601073	locking notch	
G04	G03	G02	G01

name	emergency opening
type	Notenriegelung
part no.	601080
date	16.01.2010
signature	
stamp	KONE

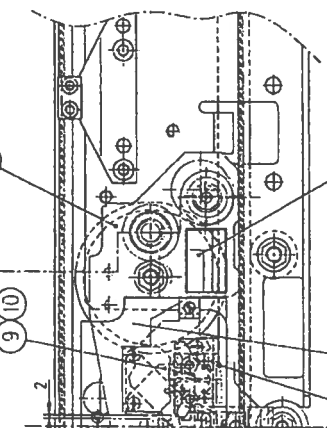
COPY ORIGINAL

601000/601006	601010	601550	604871
604807	604792	604663	604661
CR-012202		21.09.2009	ver/mdb

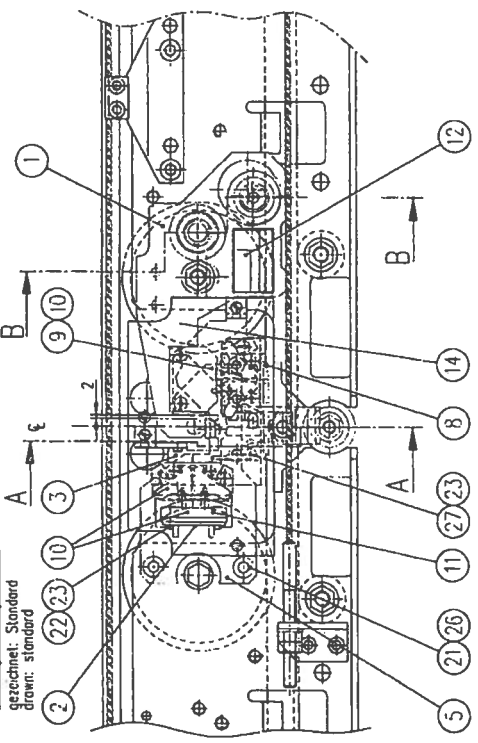
Schnitt A-A
section A-A
AMD R2



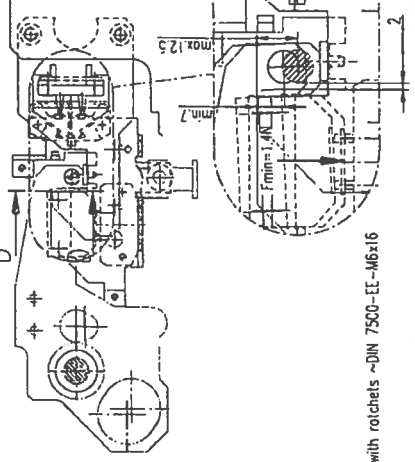
Schnitt A-A
section A-A
AMD R6



G01/G11/G21
gezeichnet: Standard
drawn: standard

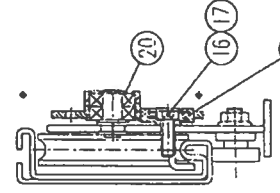


Schnitt C-C
section C-C

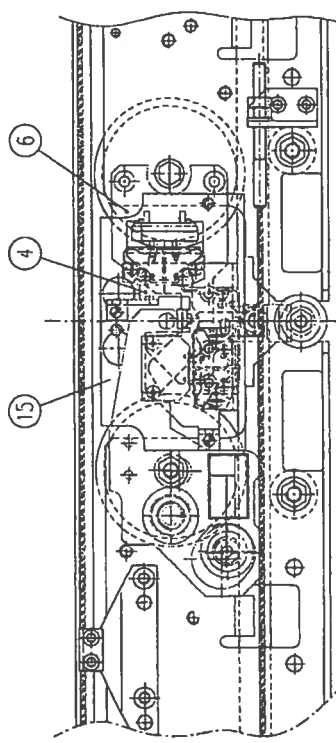


1) optional 983583 thread rolling screw with rochetts ~DN 7500-EE-M6x16

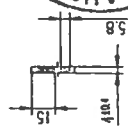
Schnitt B-B
section B-B



G02/G12/G22



Schnitt D-D
section D-D
min. hook cross section
A=74,8mm



contact plug	G12	601070 G08
Version	G11	601070 G07
standard	G02/G22	601070 G02
	G01/G21	601070 G01
	VAR. LATCH	

H11 VAR CONTACT PLUG	(incl. in contact AZ061)	274094	PO-Bel.
H10 VAR DOOR CONTACT	spez.21.58	274095	SEL2-A1Z P
H09 VAR DOOR CONTACT	spez.1997	274099	SEL2-A1Z PL
H08 VAR. CABLE BRIDGE	601110 H01		Schmersal
			Berstein
			Berstein
			Berstein

TUV AUSTRIA SERVICES
Benannte Stelle
0408
TUW
TUV A-AT-1040616 CERT
19.6.2010

Item No.	Qty	Part No.	Description	Material	Notes
1	1	H27	thread roll. screw DN7500-C-M4x8-8.8-A20		
2	2	H26	contact washer 08-550821-37/Nameel		
1	1	H25	buffer		
1	1	H24	buffer		
6	6	H23	tooth washer DM6798-A4.3-AG		
2	2	H22	hexagon socket screw DN912-M4x10-8.8-A3C		
2	2	H21	thread roll. screw M6x12 DN7500-0		
1	1	H20	retaining ring DN 471-12x1		
3	3	H19	Schnorr safety washer M06		
3	3	H18	thread roll. screw DN7500-E-M6x16-8.8-A35		
1	1	H17	Schnorr safety washer M08		
1	1	H16	thread roll. screw M6x25 DN7500 head DN7984		
1	1	H15	cover		
1	1	H14	cover		
1	1	H13	buffer		
1	1	H12	type label		
1	1	H11	CONTACT PLUG		
1	1	H10	DOOR CONTACT		
1	1	H09	DOOR CONTACT		
1	1	H08	CABLE BRIDGE		
1	1	H07	buffer framing		
1	1	H06	additional latch		
1	1	H05	additional latch		
1	1	H04	locking notch		
1	1	H03	locking notch		
1	1	H02	thread plate		
1	1	H01	LATCH		

601029

KONE

standard
Prüfung 6

contact plug
Version-RZ

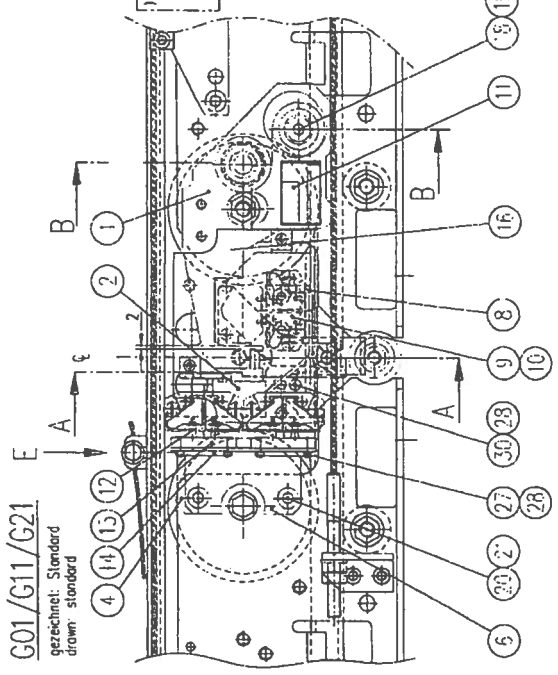
standard
Prüfung 2

basic landing door lock
Basis Schachttürschloß
Standard - centre opening type

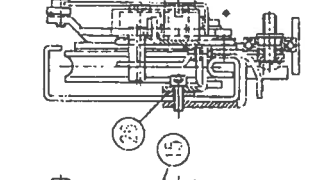
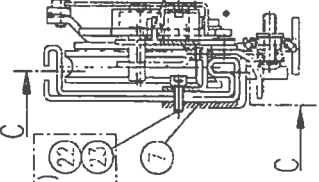
601029

G01/G11/G21

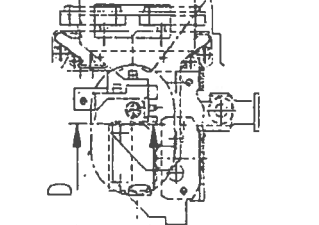
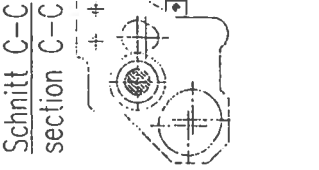
gezeichnet: Standard
drawn: standard



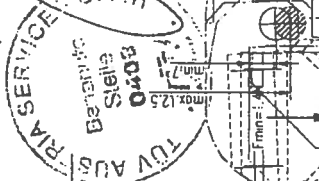
Schnitt A-A section A-A
AMD F2



Schnitt C-C section C-C



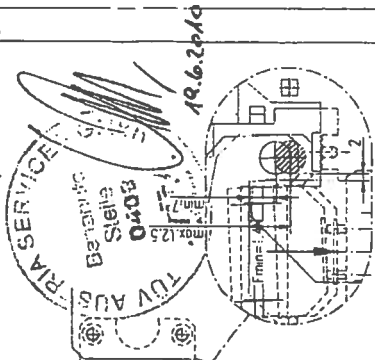
Schnitt B-B section B-B



Schnitt E-E section E-E

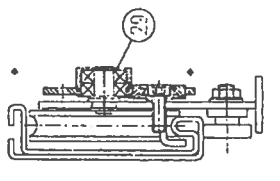
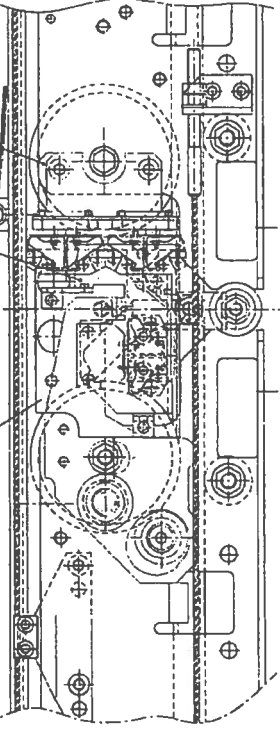


1) optional 983583 thread rolling screw with ratchets ~DIN 7500-EE-M6x16

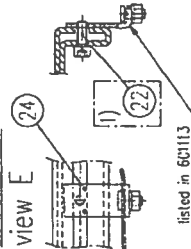


G02/G12/G22

Schnitt B-B section B-B



Ansicht E view E



Schnitt D-D section D-D

min. lock cross section
A = 74,8mm

contact plug	G12	601070 G08
Version	G11	601070 G07
Standard	G02/G22	601070 G02
	VAR. LATCH	601070 G01

H12 VAR. DOOR CONTACT	274093	SEL1-A1Z P	280102	SEL4-A1Z P
H10 VAR. DOOR CONTACT	274095	SEL2-A1Z P	280101	SEL5-A1Z P
H09 VAR. DOOR CONTACT	254995	SEL2-A1Z PL	280099	SEL5-A1Z PL
H08 VAR. CABLE BRIDGE	601110 H01	Dornstelen	601110 H04	Berstein
	601110 H01			

H30	1	1	1	1	1	H30	thread roll. screw DN7500-C-M4x8-8.8-AZG
H29	1	1	1	1	1	H29	retaining ring for shaft DN 4/7-12x1
H28	6	6	6	6	6	H28	loath washer Ax.3 DN6789-A3C
H27	4	4	4	4	4	H27	hexagon socket screw DN912-C-M4x10-4.8-AZG
H26	1	1	1	1	1	H26	distance
H25	1	1	1	1	1	H25	buffer
H24	2	2	2	2	2	H24	clamp sleeve DN 1481-2.5x10
H23	3	3	3	3	3	H23	Schnorr safety washer H06
H22	4	4	4	4	4	H22	thread roll. screw DN7500-E-M6x16-8.8-A3C
H21	2	2	2	2	2	H21	contact washer 08-550821-32/Normal
H20	2	2	2	2	2	H20	hexagon socket screw DN7984-M8x12-8.8-A3C
H19	1	1	1	1	1	H19	Schnorr safety washer M08
H18	1	1	1	1	1	H18	thread roll. screw N8x25 DN7500 head DN7984 cover
H17	1	1	1	1	1	H17	601643 G02
H16	1	1	1	1	1	H16	601043 G01
H15	1	1	1	1	1	H15	601008 H01
H14	2	2	2	2	2	H14	601208 H01
H13	2	2	2	2	2	H13	door contact bridge PO-Bel
H12	2	2	2	2	2	H12	VAR. DOOR CONTACT
H11	1	1	1	1	1	H11	605391 H01
H10	1	1	1	1	1	H10	DOOR CONTACT
H09	1	1	1	1	1	H09	DOOR CONTACT
H08	1	1	1	1	1	H08	DOOR CONTACT
H07	1	1	1	1	1	H07	CABLE BRIDGE
H06	1	1	1	1	1	H06	601078 G01
H05	1	1	1	1	1	H05	601583 H01
H04	1	1	1	1	1	H04	601584 H02
H03	1	1	1	1	1	H03	601584 H01
H02	1	1	1	1	1	H02	601582 H01
H01	1	1	1	1	1	H01	601582 H01
							LATCH

Material	St 52-13
Surface treatment	varnished
Dimensions	see drawing
Weight	0.1989 kg
Material	varnished
Surface treatment	see drawing
Dimensions	see drawing
Weight	0.1989 kg

basic landing door lock
Basis Schachttürschloß
30M-Option for centre opening types
601023





EC DECLARATION OF CONFORMITY



THE MANUFACTURER (°)

- WITTUR-6 WITTUR GmbH, Sowitschstraße 1, A-3270 Scheibbs
 - WITTUR-7 WITTUR s.r.o., Priemyselná ulica 2747/7, SK-96301 Krupina
 - WITTUR-4 WITTUR ELEVATOR COMPONENTS (Suzhou) Co. Ltd. – N° 18 Shexing Road, Beishe Town, Wujiang, Jiangsu Province, CN – 215214
(EU Mandatory: WITTUR GmbH, Sowitschstraße 1, A-3270 Scheibbs)
- (°) - see the name indicated on the Product identification label

STATES

hereby that the following safety component:

- Description: **Locking device for horizontally sliding landing doors**
- Type: **AMDL1-R2-EN**
- Serial Number and Manufacturing Year: **see the product identification label**

and to which this declaration refers, is manufactured

IN COMPLIANCE WITH

what follows:

Referring directives or standards	EC Type Examination Certificate		
	Number	Notified body for issuing the certificate	Notified body for manufacturing controls
<ul style="list-style-type: none"> - Directive 95/16/EC - Edition June 29, 1995 - European Standard EN 81-1: 1998 - European Standard EN 81-2: 1998 	TÜV-A-AT-1/00/016 CETV/2	TÜV Österreich Krugerstraße 16 A-1015 Wien, Austria ID No. 0408	WITTUR 6 & 7: TÜV Österreich Krugerstraße 16 A-1015 Wien, Austria ID No. 0408 WITTUR-4: TÜV SÜD Industrie Service GmbH Westendstraße 199, D-80686 München ID No. 0036

We also state the conformity of above said safety component with the corresponding EC Type Examination Certificate.

The authorized responsible:

For WITTUR-6, WITTUR-7 & WITTUR-4
Andreas Zwerger

i.v. [Signature]

