

Baumusterprüfbescheinigung

EN81-1/2: 1998

Certificate of Type examination

EN81-1/2: 1998

Name der zugelassenen Stelle:
Name of the approved body:

TÜV AUSTRIA SERVICES GMBH
Krugerstraße 16
A-1015 Wien
ID-Nr.: 0408

Nummer der Baumusterprüfung:
Number of type examination:

TÜV-A-AT-1/99/008 FKTV/4

1. Art, Kategorie, Typ und Fabrik- oder Handelsmarke:
Category, type and make or trade name:

Verriegelungseinrichtung für waagrecht bewegte Fahrkorb-Schiebetüren Type AMDC3-R2
Locking device for horizontally sliding car doors type AMDC3-R2

2. Name und Anschrift des Herstellers:
Manufacturer's name and address:

WITTUR GesmbH
Sowitschstraße 1
A-3270 Scheibbs
AUSTRIA

3. Name und Anschrift des Inhabers der Bescheinigung:
Name and address of certificate holder:

KONE Corporation
Kartanontie 1
FIN-00330 Helsinki
FINLAND

4. Datum der Vorlage zur Zertifizierung:
Date of submission for certification:

22.03.2010

5. Aufgrund folgender Vorschrift ausgestellte Bescheinigung:
Certificate issued on the basis of the following requirement:

EN81 Teil 1 und Teil 2, August 1998
EN81 Part 1 and Part 2, August 1998

Auszugsweise Vervielfältigung nur mit Genehmigung der TÜV AUSTRIA SERVICES GMBH gestattet
Duplication of this document in parts is subject to the approval TÜV AUSTRIA SERVICES GMBH

6. Prüfstelle:
Test laboratory:
- TÜV AUSTRIA SERVICES GMBH
Krugerstraße 16
A-1015 Wien
7. Datum und Nummer des Prüfprotokolls:
Date and number of laboratory report:
- AT1-TV-99/6 vom / *dated* 25.05.1999
AT1-TV-99/7 vom / *dated* 07.09.1999
2004-AT-SP/035 vom / *dated* 15.10.2004
8. Datum der Prüfung:
Date of examination:
- 15.10.2004
9. Folgende, mit der Bescheinigungsnummer gekennzeichnete Unterlagen sind dieser Bescheinigung beigelegt:
Following documents, indicated with the certificate number are annexed to this certificate:

Zeichnung/Drawing 601283, issue K, dated 16.04.2010
Zeichnung/Drawing 601232, issue J, dated 04.01.2010
Zeichnung/Drawing 602304, issue F, dated 06.08.2008
Zeichnung/Drawing 603491, issue C, dated 24.11.2008
Zeichnung/Drawing 603973, issue D, dated 09.11.2007

10. Zusätzliche Angaben:
Additional information:

- Art und Verwendungsbereich des Türverschlusses
Type and scope of use of the door locking device

Verriegelungseinrichtung, Typ AMDC3-R2 mit Hakenriegel für waagrecht bewegte, mittig öffnende, vierblättrige Fahrkorb-Schiebetüren mit maschineller Betätigung
Door locking device type AMDC3-R2 with lock hook for horizontally moving, centre opening, four panel power operated car sliding door

- Zulässige Türabmessungen
Allowed door measurements

Lichte Türbreite <i>door width</i>	Lichte Türhöhe <i>door height</i>	Max. Masse eines Türblattes <i>Max. mass single door panel</i>
1200 - 3000 mm	1900 – 3000 mm	100 kg

- Nennwerte der elektrischen Sicherheitseinrichtungen
Nominal value of the electrical safety components

Wechselstrom 230 V/2A
Alternating current

Auszugsweise Vervielfältigung nur mit Genehmigung der TÜV AUSTRIA SERVICES GMBH gestattet
Duplication of this document in parts is subject to the approval TÜV AUSTRIA SERVICES GMBH

- Die Fahrkorbtürverriegelung kann als Ersatz für Fahrkorbverriegelungen mit folgenden Zertifikatsnummern verwendet werden:
The locking device for car doors can be used as replacement for locking devices with following license numbers:

TÜV-A-AT-1/99/008 FKTV
TÜV-A-AT-1/99/008 FKTV/1
TÜV-A-AT-1/99/008 FKTV/2
TÜV-A-AT-1/99/008 FKTV/3

11. Diese Bescheinigung darf nur im Ganzen mit den Unterlagen nach Pkt. 9 verbreitet werden.
Spread of this certificate allowed just complete together with documents according point 9.

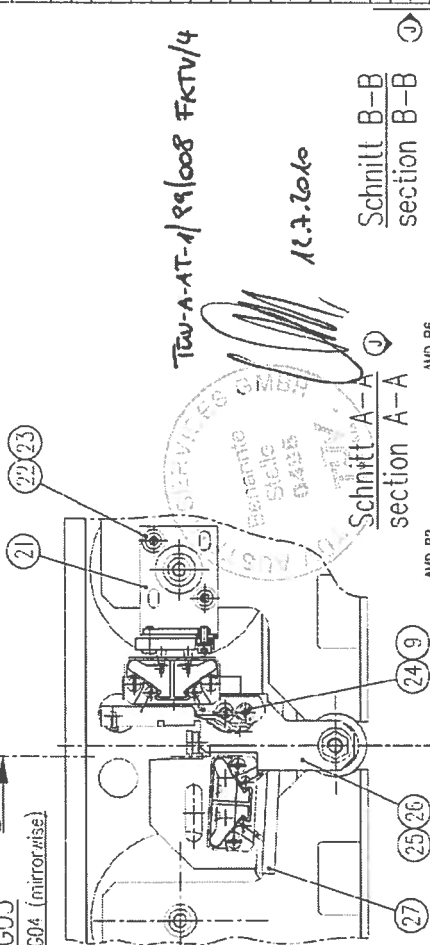
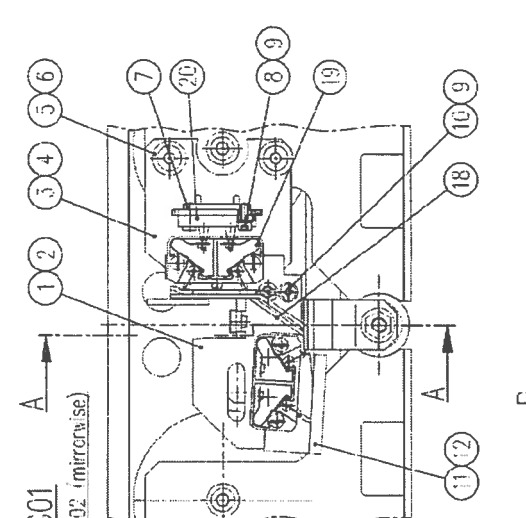
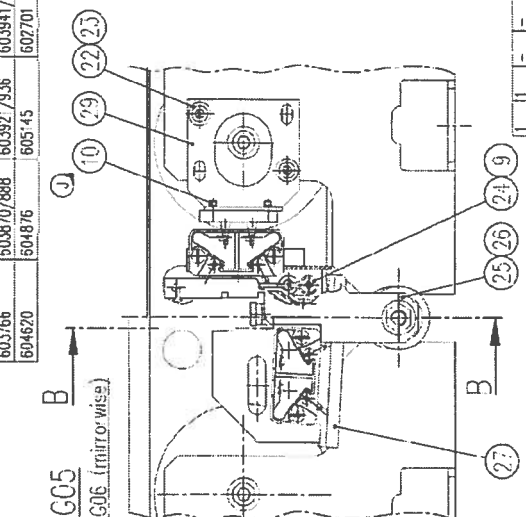
Diese Bescheinigung entspricht aus rechtlichen Gründen keiner EG-Baumusterprüfbescheinigung gemäß Anhang V Abschnitt A (EG-Baumusterprüfung für Sicherheitsbauteile) der Richtlinie 95/16/EG.
This certificate is not an EC-type-examination according to annex V par. A (EC-type-examination for safety components) of directive 95/16/EC.

12.07.2010
Ausstellungsdatum
Date of issue

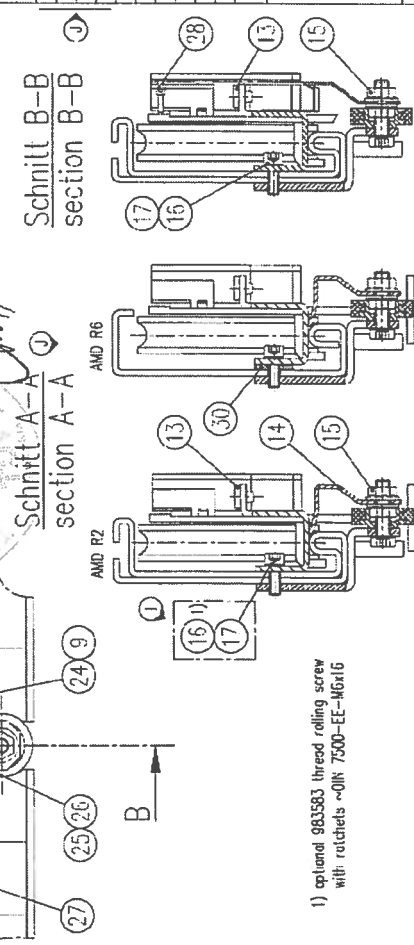


Ing. Stephan STÖRMER
Leiter der Prüfstelle
Head of examination & testing

DI Gottfried JUNG
Certifying Department



TW-A-AT-1/891008 FKTv/4
11.7.2010



1) optional 983583 thread rolling screw with ratchets -ØIN 7500-EE-M6x16

* 263802 (AZ06 T) beinhaltet:
Kontakt (AZ06 KT-Spez. 1736) und Brücke (AZ06 B/18)
263802 (AZ06 T) includes:
contact (AZ06 KT-Spez. 1736) and bridge (AZ06 B/18)

H26 WIRE COVER	605155 H04	605155 H02	G03/G04
H25 WIRE COVER	605155 H03	605155 H01	
H20 CONTACT BRIDGE	274094 PO-Bel.	274094 PO-Bel.	
H19 DOOR CONTACT	263802 AZ06 KT-Spez. 1736	274095 SCL2-A17 P	
H18 CABLE BRIDGE	601110 G04	601110 G04	
Pos.	Schmeisöl	Bernstein	
		VAR. DOOR CONTACT	

Part No.	Quantity	Description	Material	Unit
H30	1	902838 H01	distance	
H29	1	602483 H02		
H28	1	236828	cable tie PL I-M/98	
H27	1	601236 H01		
H26 VAR.	1		WIRE COVER	
H25 VAR.	1		WIRE COVER	
H24	2	601305 H01		
H23	2		contact washer 05-550811-32/Name!	
H22	2		hex.socket scr.low DN6912-M6x10-8.8-A3G	
H21	1	605131 H02		
H20 VAR.	1		CONTACT BRIDGE	
H19 VAR.	1		DOOR CONTACT	
H18 VAR.	1		CABLE BRIDGE	
H17	3	408079	Schnorr lock washer M06	
H16	3	268146	thread roll scr DRY7500-E-M6x16-8.8-A3G	
H15	1	261289	hex. flange nut lock DN6923-M8-A3G	
H14	1	601585 H01		
H13	1	601108 H01		
H12	1	601235 H02		
H11	1	601235 H01		
H10	1		thread roll scr.lock DN7500-C-M4x8-8.8-A3G	
H09	3		serrated lock washer DN6798-A4.3-A3G	
H08	2		hex.socket screw DN9172-M4x10-8.8-A3G	
H07	1	601208 H01		
H06	2		contact washer 08-550821-32/Name!	
H05	2		hex.socket scr.low DN7984-M8x12-8.8-A3G	
H04	1	601535 H01		
H03	1	601535 H02		
H02	1	601534 H02		
H01	1	601534 H01		

Herstellung und Qualität
New material dimensions and quality

Material: AMO
car door contact complete - lock
Kabinenirkontakt Lampi - Schloß
centre opening type - R2
601232

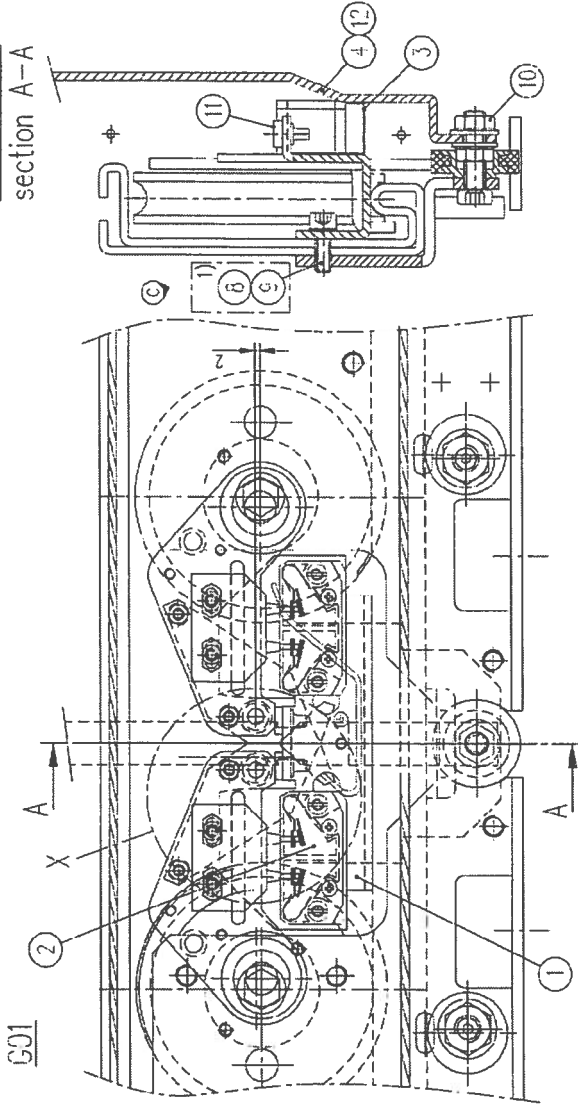
Parting 2
Parting 1
Parting 6
Parting 5

Parting 3
Parting 4
Parting 7
Parting 8
Parting 9
Parting 10
Parting 11
Parting 12
Parting 13
Parting 14
Parting 15
Parting 16
Parting 17
Parting 18
Parting 19
Parting 20
Parting 21
Parting 22
Parting 23
Parting 24
Parting 25
Parting 26
Parting 27
Parting 28
Parting 29
Parting 30

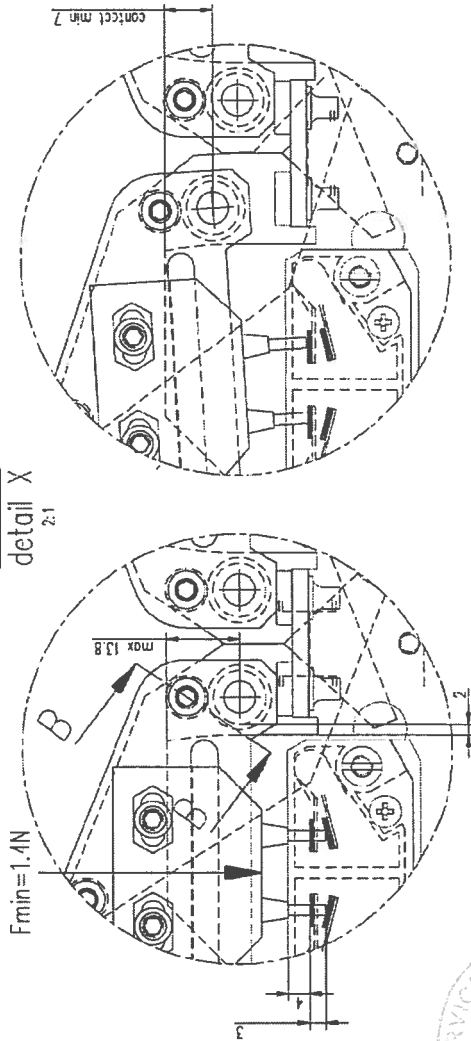
Parting 31
Parting 32
Parting 33
Parting 34
Parting 35
Parting 36
Parting 37
Parting 38
Parting 39
Parting 40
Parting 41
Parting 42
Parting 43
Parting 44
Parting 45
Parting 46
Parting 47
Parting 48
Parting 49
Parting 50

1) optional 983583 thread rolling screw with ratchets ~DIN 7500-EE-M6x16

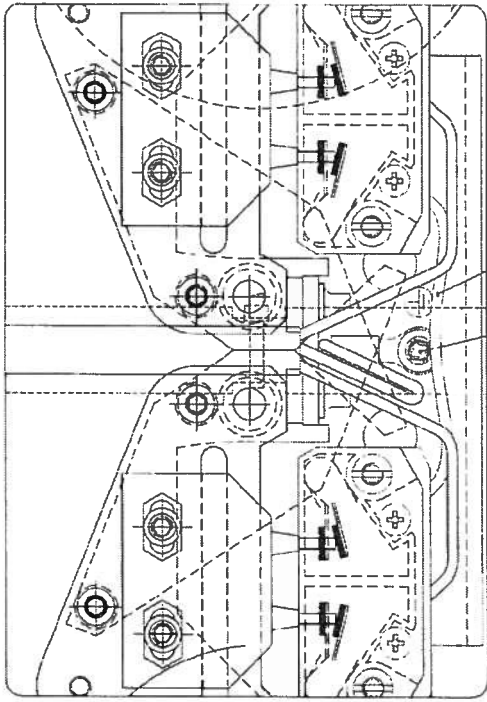
Schnitt A-A
section A-A



Detail X
detail X
2:1



wiring M 2:1



Schnitt B-B
section B-B
min. hook cross section
A = 64,5mm² 4=0.4

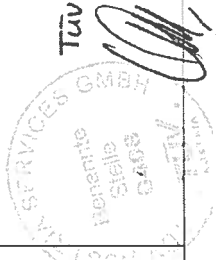
Pos.	Bezeichnung	Material	Maßstab	Größe	Größe	Größe	Größe	Größe	Größe	Größe
1	HR12	603606	H03							
2	H11	601108	H01							
1	H10			261269	SK1-MmFl u.LK-Vz. DIN6923-M8-B-A3C					
4	H09			406029	Schnurr-Sicherung M06					
4	H08			268146	Furchschr. DIN7500-E-M6x16-8.8-A3G					
4	H07			965569	fliread roll. scrlock DMT7500-C-M6x8-8.8-APC					
2	H06			201869	Führscheibe DIN6798-A4.3-A3G					
-	H05	601110	H04							
1	H04	603606	H02							
1	H03	603606	H01							
2	H02			VAR	DOER CONTACT					
1	H01	603302	H01							
1	H01	603302	H01							

Größe	Größe	Größe	Größe	Größe	Größe	Größe	Größe	Größe	Größe
car door contact complete - lock									
Kabinenürkontakt kompl. - Schloß									
two lock coupler centre opening type - R2									

Größe	Größe	Größe	Größe	Größe
SEL2-AZ P 280101				
SEL5-AIZ P				
Berstein				
Berstein				
YAP DOOR CONTACT				

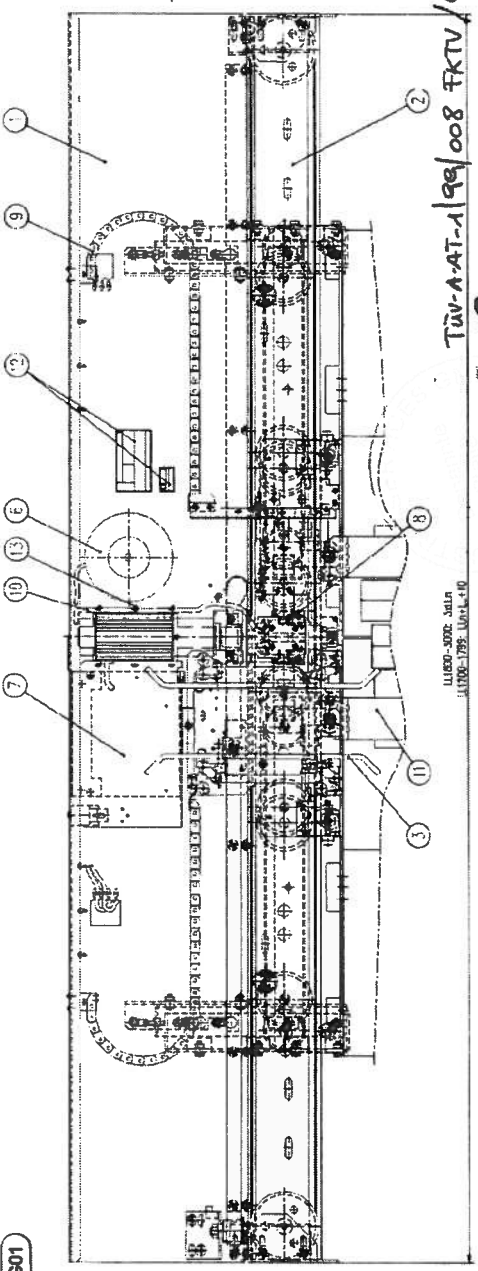
TUV-A-AT-1/99/008 FKTv/4

12.7.2010



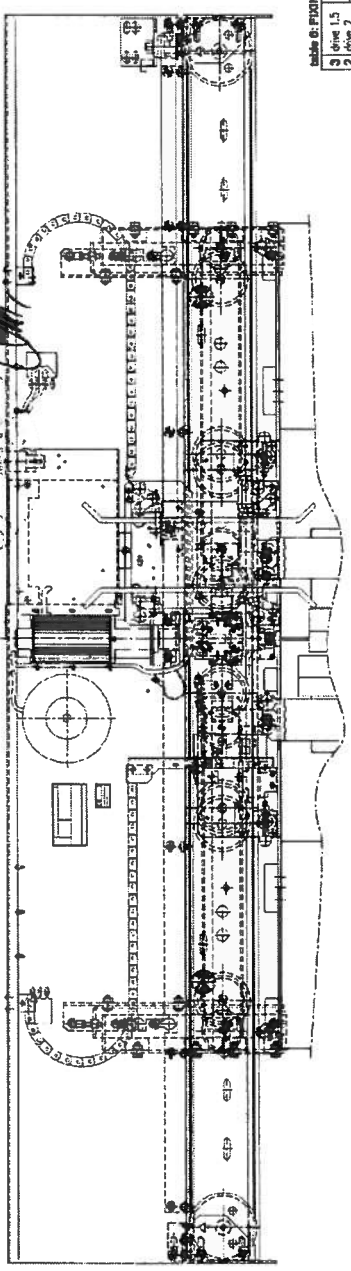
COPY ORIGINAL

G01



TÜV-A1-199/008 FKTV/4

G02



12.7.2010

view A

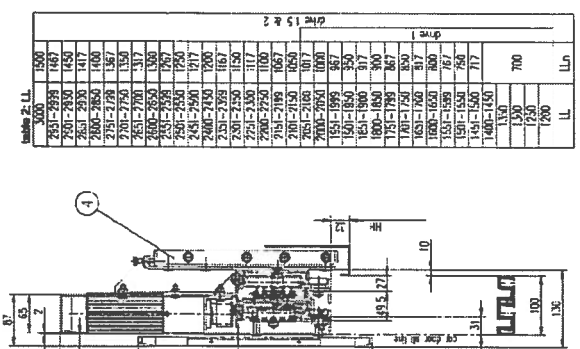


Table 2: LL table with dimensions and part numbers.

Table 3: LL table with dimensions and part numbers.

Table 4: LL table with dimensions and part numbers.

Table 5: LL table with dimensions and part numbers.

Table 6: LL table with dimensions and part numbers.

Table 7: LL table with dimensions and part numbers.

Table 8: LL table with dimensions and part numbers.

Table 9: LL table with dimensions and part numbers.

Table 10: LL table with dimensions and part numbers.

Table 11: LL table with dimensions and part numbers.

Table 12: LL table with dimensions and part numbers.

Table 13: LL table with dimensions and part numbers.

Table 14: LL table with dimensions and part numbers.

Table 15: LL table with dimensions and part numbers.

Table 16: LL table with dimensions and part numbers.

Table 17: LL table with dimensions and part numbers.

Table 18: LL table with dimensions and part numbers.

Table 19: LL table with dimensions and part numbers.

Table 20: LL table with dimensions and part numbers.

Table 21: LL table with dimensions and part numbers.

Table 22: LL table with dimensions and part numbers.

Table 23: LL table with dimensions and part numbers.

Table 24: LL table with dimensions and part numbers.

Table 25: LL table with dimensions and part numbers.

Table 26: LL table with dimensions and part numbers.

Table 27: LL table with dimensions and part numbers.

Table 28: LL table with dimensions and part numbers.

Table 29: LL table with dimensions and part numbers.

Table 30: Specifications and standards table.

Table 31: Standards and certificates table.

Table 32: Standards and certificates table.

Table 33: Standards and certificates table.

Table 34: Standards and certificates table.

Table 35: Standards and certificates table.

Table 36: Standards and certificates table.

Table 37: Standards and certificates table.

Table 38: Standards and certificates table.

Table 39: Standards and certificates table.

Table 40: Standards and certificates table.

Table 41: Standards and certificates table.

Table 42: Standards and certificates table.

Table 43: Standards and certificates table.

Table 44: Standards and certificates table.

Table 45: Standards and certificates table.

Table 46: Standards and certificates table.

Table 47: Standards and certificates table.

Table 48: Standards and certificates table.

Table 49: Standards and certificates table.

Table 50: Standards and certificates table.

Table 51: Standards and certificates table.

Table 52: Standards and certificates table.

Table 53: Standards and certificates table.

Table 54: Standards and certificates table.

Table 55: Standards and certificates table.

Table 11: CABLE CHAIN table with part numbers and specifications.

Table 10: DOOR CONTACT table with part numbers and specifications.

Table 8: PINGING table with part numbers and specifications.

Table 8: TRANSFORMER table with part numbers and specifications.

Table 9: MANUAL table with part numbers and specifications.

Table 12: CABLE table with part numbers and specifications.

Table 4: RAILING table with part numbers and specifications.

Table 7: EOOD table with part numbers and specifications.

Table 15: PANEL SUPPORT table with part numbers and specifications.

Table 8: DRIVE table with part numbers and specifications.

Table 8: COUPLER table with part numbers and specifications.

Table 1: CHARACTERISTICS table with various parameters and values.

Table 8: DRIVE table with part numbers and specifications.

Table 8: COUPLER table with part numbers and specifications.

Table 15: PANEL SUPPORT table with part numbers and specifications.

Table 8: DRIVE table with part numbers and specifications.

Table 8: COUPLER table with part numbers and specifications.

Table 1: CHARACTERISTICS table with various parameters and values.

Table 8: DRIVE table with part numbers and specifications.

Table 8: COUPLER table with part numbers and specifications.

Table 1: CHARACTERISTICS table with various parameters and values.

Table 2: CHARACTERISTICS table with various parameters and values.

Table 3: CHARACTERISTICS table with various parameters and values.

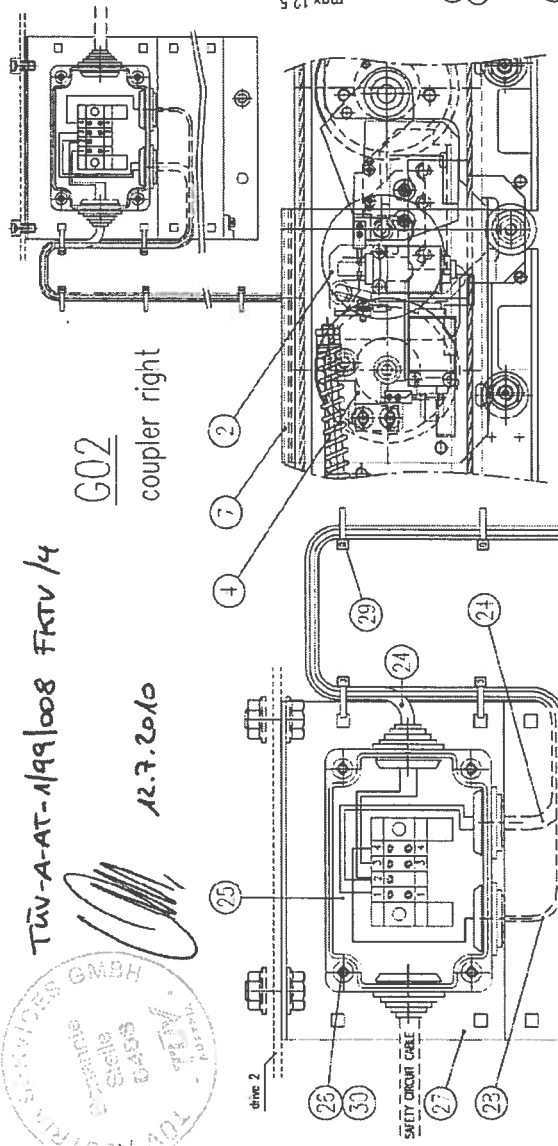
Table 4: CHARACTERISTICS table with various parameters and values.

601283

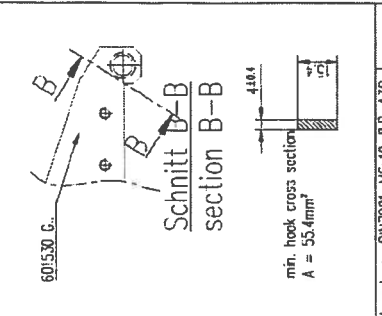
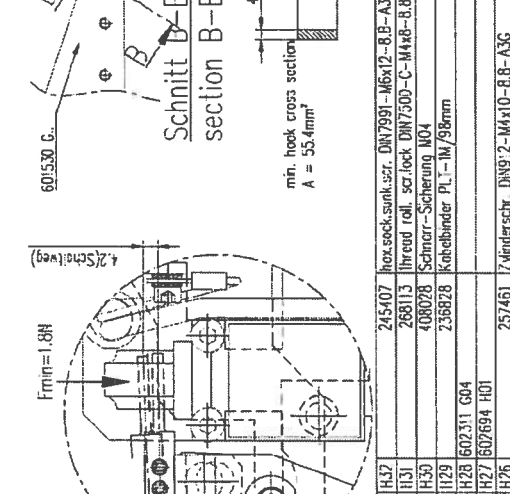
AMEC 3C - R2



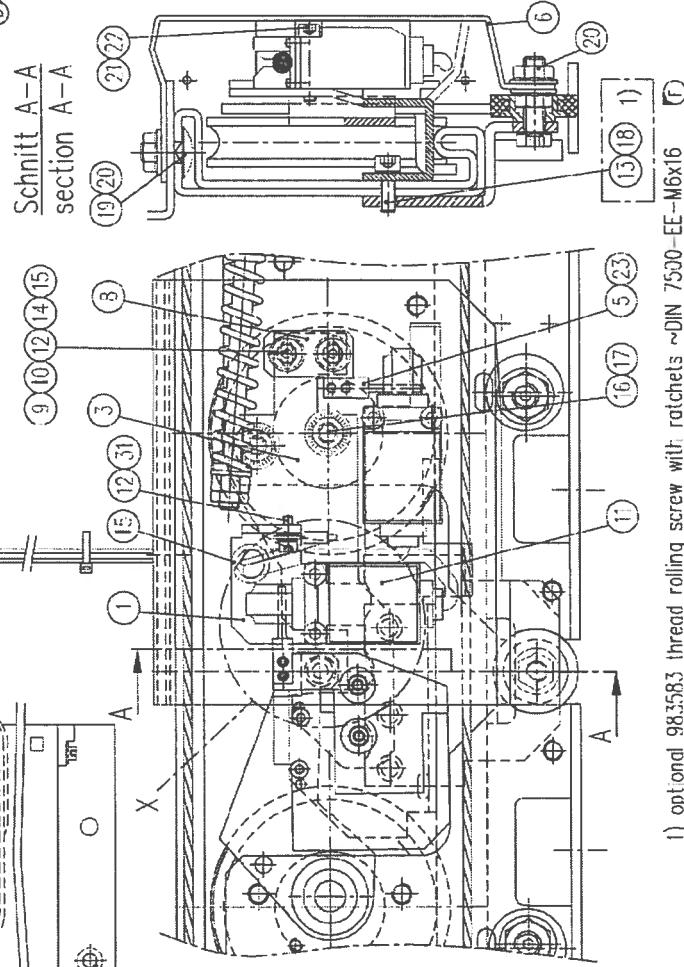
G02
coupler right



G01
coupler left



Schnitt A-A
section A-A



Item	Part No.	Description	Material	Quantity	Remarks
1	1437	Holzsockel, sunk.usr. DN7991-M6x12-8.8-A3C		1	
1	1131	Thread roll. scr.lock DN7500-C-M4x8-8.8-A3C		1	
4	H30	Schmerr-Sicherung N04		4	
5	129	Klebbinder PL-1M/98mm		5	
1	H28	602.311 G04		1	
1	H27	602.694 H01		1	
4	H26			4	
1	H25	602.679 G01		1	
2	H24	602.311 G02		2	
2	1123	Spannhülse DIN1481-3x8		2	
4	1122	Schmerr-Sicherung N05		4	
2	H21	Zylinderschr. DN912-M5x25-8.8-A3C		2	
2	H20	SK-M m.F. u.LK-Vz. DN6973-M8-8-A3C		2	
1	H19	Flochrundschr. DN603-M8x16-8.8-A3C		1	
3	H18	Schmerr-Sicherung N06		3	
2	H17	Contactschraube 08-550821-32/Normal		2	
2	H16	Zylinderschr. DN7984-M6x12-8.8-A3C		2	
3	H15	256598 Kabelhülle OK912/16-3		3	
3	H14	Zylinderschr. DN912-M4x12-8.8-A3C		3	
3	H13	Furchschr. DN7500-E-M6x16-8.8-A3C		3	
4	H12	201889 Flächerschraube DN6790-R4.3-A3C		4	
2	H11	274626 Lührkontakt 11-A1Z KS		2	
1	H10	601.350 H03		1	
2	H09	602.367 H02		2	
1	H08	602.377 H03		1	
1	H07	602.366 H02		1	
1	H06	602.366 H01		1	
1	H05	602.356 H01		1	
1	H04	602.355 H02		1	
1	H03	602.355 H01		1	
1	H02	601.353 H02		1	
1	H01	601.353 H01		1	

1) optional 98.3583 thread rolling screw with ratchets ~DIN 7500-EE-M6x16