



Industrie Service

# EC TYPE-EXAMINATION CERTIFICATE

According to Annex V, Part A of 95/16/EC Directive

<b>Certificate No.:</b>	AFV 203/7
<b>Certification Body of the Notified Body:</b>	TÜV SÜD Industrie Service GmbH Westendstr. 199 80686 Munich – Germany Identification No. 0036
<b>Certificate Holder:</b>	INVENTIO AG Seestrasse 55 6052 Hergiswil – Switzerland
<b>Manufacturer of the Test Sample:</b> (Manufacturer of Serial Production - see Enclosure)	Schindler Drive Systems Poligono “Empresarium” Albardin, 58 50720 La Cartuja Baja – Zaragoza – Spain
<b>Product:</b>	Instantaneous safety gear
<b>Type:</b>	SA RF 1 ID-Nr.: 59314560
<b>Directive:</b>	95/16/EC
<b>Reference Standards:</b>	EN 81-20:2014 EN 81-50:2014 EN 81-1:1998+A3:2009 EN 81-2:1998+A3:2009
<b>Test report:</b>	AFV 203/7 of 2015-07-31
<b>Outcome:</b>	The safety component conforms to the essential health and safety requirements of the mentioned Directive as long as the requirements of the annex of this certificate are kept.
<b>Date of Issue:</b>	2015-08-03



*Werner Rau*  
Werner Rau

Certification Body “lifts and cranes”

**Annex to the EC type-examination certificate  
no. AFV 203/7 dated 2015-08-03**



Industrie Service

**1 Scope of application**

1.1 Permissible total mass of car and rated load or counterweight in using one pair of safety gears, depends on maximum tripping speed of the overspeed governor and the blade width of guide rails

Tripping speed (m/s)	Maximum total mass (kg)		
	Blade width 8 mm	Blade width 9 mm	Blade width 10 - 16 mm
0.50	3890	4053	4943
0.60	3743	3900	4756
0.70	3583	3733	4553
0.80	3414	3558	4339
0.90	3241	3378	4119
1.00	3068	3197	3899
1.10	2897	3018	3681
1.20	2730	2844	3469
1.32	2530	2645	3226
1.40	2415	2516	3069
1.55	2200	2293	2796
1.65	2067	2154	2626

1.2 Maximum rated speed

1.2.1 Car 0.63 m/s

1.2.2 Counterweight 1.00 m/s

1.3 Maximum tripping speed of overspeed governor

1.3.1 Car 1.00 m/s

1.3.2 Counterweight 1.65 m/s

1.4 Minimum running surface width of guide rails 27 mm

**2 Conditions**

2.1 For identification and information about the principal construction and operation and for demarcation of the examined and approved sample the identification drawing M \_\_ 41314560 with certification stamp dated 2015-08-03 has to be enclosed to the EC type-examination certificate and its annex.

2.2 The EC type-examination certificate may only be used in connection with the pertinent annex and the enclosure (list of the manufacturers serial production). This enclosure shall be updated and re-edited following information of the certificate holder.

**3 Remarks**

3.1 The test over covers the safety gear and the safety gear elements (rollers) and did not include either the connection between the individual safety gear elements (safety gear rods) or the actuation of the electric safety device. When connecting the safety gear elements to the overspeed governor, attention must be paid to the fact that, at the point at which the overspeed governor rope engages, the car don't travel more than 0,03 m until the safety gear element engage.

3.2 This EC type-examination certificate is based modelled after and /or harmonized standards as following:

- EN 81-1:1998 + A3:2009 (D), Anhang F.3
- EN 81-2:1998 + A3:2009 (D), Anhang F.3
- EN 81-20:2014 (D), Punkt 5.6.2.1.1.2
- EN 81-50:2014 (D), Punkt 5.3

3.3 Changes resp. extensions of the upper mentioned standards or a further development of the state of the art may make a revision of this EC type-examination certificate necessary.

**Note:** The English text is a translation of the German original. In case of any discrepancy, the German version is valid only.

**Enclosure of EC type-examination certificate  
no. AFV 203/7 dated 2015-08-03**



Industrie Service

**Manufacturer serial production – production sites (Stated: 2015-08-03):**

**Company**      **Schindler Drive Systems**  
**Address**      Poligono “Empresarium”  
                    Albardin 58  
                    50720 La Cartuja Baja – Zaragoza - Spain

**Company**      **Elevadores Atlas Schindler S. A.**  
**Address**      R. Angelina Ricci Vezozzo, 3400  
                    86087 Londrina – Brasil

- ENDE DOKUMENT -

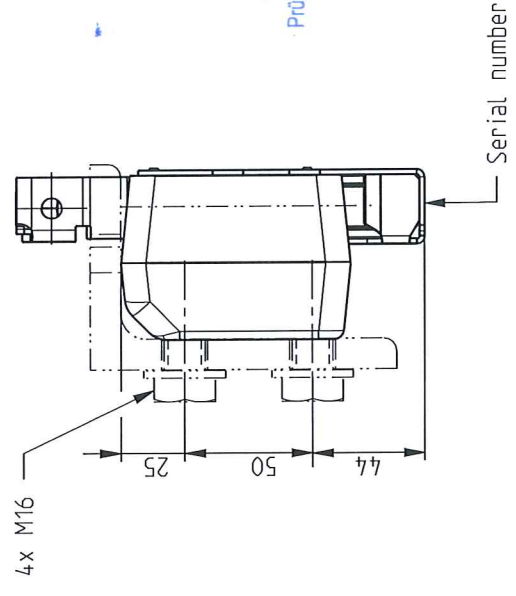
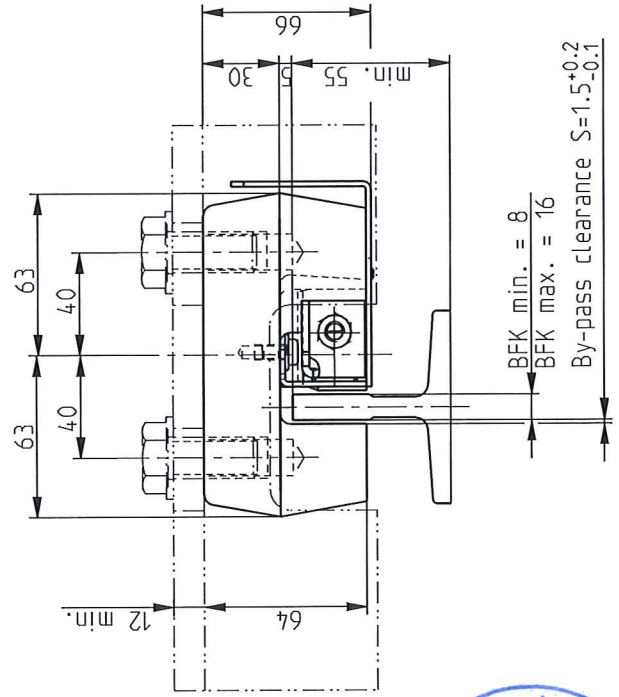
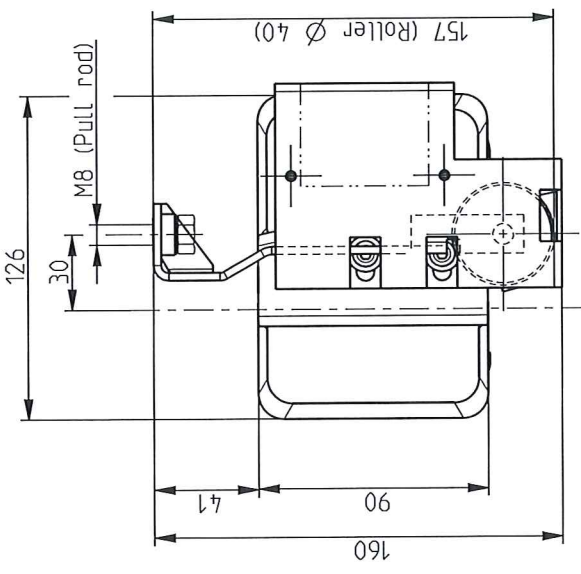
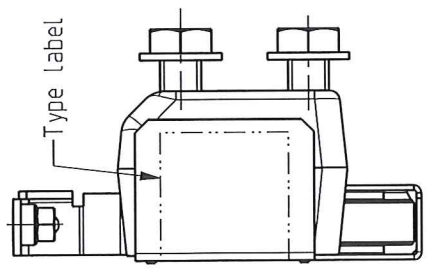
Base: Letter of SCHINDLER Aufzüge AG dated 28.01.2015

This presentation is our intellectual property. Without our written consent, it shall neither be copied in any manner, nor used for manufacturing, nor communicated to third parties.

Diese Darstellung ist unser geistiges Eigentum. Sie darf ohne unsere schriftliche Zustimmung weder reproduziert noch zur Anfertigung des Werkes gebraucht oder Dritten bekanntgegeben werden.

Cet ouvrage est notre propriété intellectuelle. Sans notre autorisation écrite, il ne peut être ni copié, ni communiqué à des tiers.

PROE.



**03.AUG. 2015**  
**GEPRÜFT / APPROVED**  
 TÜV SÜD Industrie Service GmbH  
 Prüflaboratorium für Produkte der Fördertechnik  
 Westendstraße 199  
 80686 München  
 Sachverständige / Expert

Notes:

- SA RF 1 works only in down direction

Ident. No.	59314560	Semi finished product / raw material	Item	Code surface	Heat treatment	Dwg / Model	Weight
Modification			AE1	Draw Ver.	Related BPH		4,886
KA No.	159480		2015-10-17	Model Ver.	Related BPH		
KA Date				11	Release Level		
Group: SAFETY							
Dimensioned Drawing SA RF 1							
SA RF 1							
Classification 11540 Format A3							
INVENTIO AG CH-6052 Hergiswil							
Lead Office EB3							
M_4 1314560							
Lamp. EN							