



Industrie Service

EU-TYPE EXAMINATION CERTIFICATE

According to Annex IV, Part A of Directive 2014/33/EU

Certificate No.:	EU-SG 1037
Certification Body of the Notified Body:	TÜV SÜD Industrie Service GmbH Westendstr. 199 80686 Munich – Germany Identification No. 0036
Certificate Holder:	INVENTIO AG Seestrasse 55 6052 Hergiswil – Switzerland
Manufacturer of the Test Sample: (Manufacturer of Serial Production - see Enclosure)	Schindler Drive Systems Poligono “Empresarium” Albardin, 58 50720 La Cartuja Baja - Zaragoza – Spain
Product:	Instantaneous safety gear
Type:	SA RF 0002 ID-No.: 59502701
Directive:	2014/33/EU
Reference Standards:	EN 81-20:2014 EN 81-50:2014
Test report:	No. EU-SG 1037 of 2018-08-06
Outcome:	The safety component conforms to the essential health and safety requirements of the mentioned Directive as long as the requirements of the annex of this EU-type examination certificate are kept.
Date of Issue:	2018-08-06

Achim Janocha
Certification Body “lifts and cranes”



**Annex to the EU-Type Examination Certificate
No. EU-SG 1037 dated 2018-08-06**



Industrie Service

1 Scope of application

1.1 Generally

Following application possibility refer to a brand new pair of safety gear.

Minimum running surface width of guide rails	28 mm
Blade width of guide rails	9 - 10 mm
Maximum rated speed car	0.63 m/s
Maximum tripping speed overspeed governor	
Car	1.00 m/s
Counterweight	1.65 m/s

1.2 Permissible total mass of car and rated load depending on maximum tripping speed

Tripping speed [m/s]	Maximum total mass [kg]
0.50	3264
0.60	3141
0.70	3006
0.80	2865
0.90	2720
1.00	2574
1.10	2431
1.20	2290
1.32	2130
1.65	1734

2 Terms and Conditions

- 2.1 In order to provide identification and information about the basic design and its functioning and to show the environmental conditions and connection requirements pertaining to the tested and approved type drawing M _ _ 59502701 including stamp dated 2018-08-06 is to be enclosed with the EU type-examination certificate and the annex thereto.
- 2.2 The EU type-examination certificate may only be used in combination with the corresponding annex and enclosure (List of authorized manufacturer of the serial production). The enclosure will be updated immediately after any change by the certification holder.

3 Remarks

- 3.1 The test covers the safety gear and the safety gear elements (rollers) and did not include either the connection between the individual safety gear elements (safety gear rods) or the actuation of the electric safety device.
- 3.2 The instantaneous safety gear can also be used to a counterweight in compliance with the permissible total mass according table 1.2 of this certificate till permissible tripping speed.
- 3.3 Examination of compliance with other requirements according standard, reduction of braking effect due to wear-and-tear or alterations to the installation due to the installation's operation such as alterations to the running surfaces of the guide rails, are not part of this type-examination.
- 3.4 This EU type-examination certificate was issued according to the following standards:
 - EN 81-1:1998 + A3:2009 (D), Annex F.3
 - EN 81-2:1998 + A3:2009 (D), Annex F.3
 - EN 81-20:2014 (D), part 5.6.2.1.1.2
 - EN 81-50:2014 (D), part 5.3

A revision of this EU type-examination certificate is inevitable in case of changes or additions of the above mentioned standards or of changes of state of the art.

Note: The English text is a translation of the German original. In case of any discrepancy, the German version is valid only.

**Enclosure of EU-Type Examination Certificate
No. EU-SG 1037 dated 2018-08-06**



Industrie Service

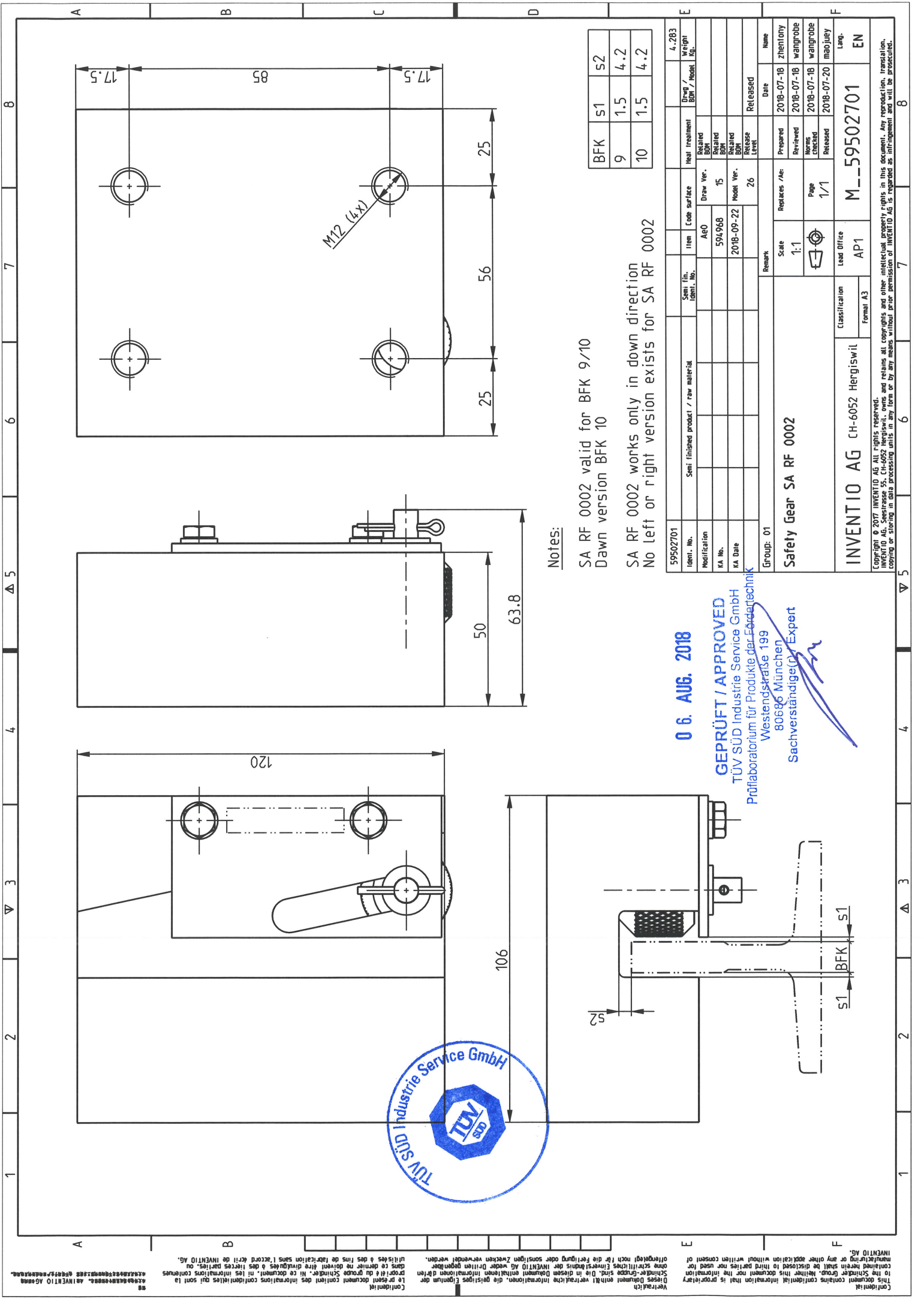
Authorised Manufacturer of Serial Production – Production Sites (Stated: 2018-08-06):

Company Schindler Drive Systems
Address Poligono “Empresarium”
Albardin 58
50720 La Cartuja Baja - Zaragoza – Spain

Company Schindler (China) Elevator Co. Ltd.
Address No. 818 Jin Men Road
215004 Suzhou – P.R. China

Company Schindler (China) Elevator Co. Ltd.
Address No. 555 Xing Shun Road, Jiading District,
201800 Shanghai – P.R. China

- ENDE DOKUMENT -



Notes:

SA RF 0002 valid for BFK 9/10
Dawn version BFK 10

SA RF 0002 works only in down direction
No left or right version exists for SA RF 0002

BFK	s1	s2
9	1.5	4.2
10	1.5	4.2

0 6. AUG. 2018

GEPRÜFT / APPROVED
 TÜV SÜD Industrie Service GmbH
 Prüflaboratorium für Produkte der Elektrotechnik
 Westendstraße 199
 80686 München
 Sachverständiger/Expert

Ident. No.	59502701	Semi-finished product / raw material		Item	Code surface	Heat treatment	Draw / Model	4.283	
Modification									
KA No.				AE0	Draw Ver.	Related BDK			
KA Date				594968	15	Related BDK			
Group: 01				2018-09-22	Model Ver.	Released			
					26	Release Level			
Safety Gear SA RF 0002		Scale 1:1		Replaces / Ae:		Prepared		2018-07-18	Zheniomy
		Lead Office		Page		Reviewed		2018-07-18	wangprobe
		Classification		1/1		Norms Included		2018-07-18	wangprobe
		Format A3				Released		2018-07-20	maojuey
INVENTIO AG CH-6052 Hergiswil		AP1		M__59502701					EN

Copyright © 2017 INVENTIO AG. All rights reserved. INVENTIO AG, Seesraße 55, CH-6052 Hergiswil, owns and retains all copyright and other intellectual property rights in this document. Any reproduction, translation, copying or storing in data processing units in any form or by any means without prior permission of INVENTIO AG is regarded as infringement and will be prosecuted.