



## EC type-examination certificate

**Certificate no.:** AFV 015/6

**Notified body:** TÜV SÜD Industrie Service GmbH  
Westendstr. 199  
D-80686 München

**Applicant/  
Certificate holder:** Inventio AG  
Seestr. 55  
CH-6052 Hergiswil

**Date of application:** 2009-09-22

**Accredited manufacturer  
of the holding:** Schindler Drive Systems  
Poligono „Empresarium“  
Albardin, 58  
ES-50720 La Cartuja Baja – Zaragoza

Suzhou Schindler Elevator Co. Ltd.  
818 Jin Men Road  
CN-Suzhou 215004

**Product** Progressive safety gear

**Type:** SA G 11

**Test laboratory:** TÜV SÜD Industrie Service GmbH  
Abteilung Aufzüge und Sicherheitsbauteile  
Westendstr. 199  
D-80686 München

**Date and  
number of test report:** 2009-11-30  
015/6

**EC-Directive:** 95 / 16 / EC

**Result:** The safety component conforms to the directive's essential safety requirements for the respective scope of application stated on page 1 of the annex to this EC type-examination certificate.

**Date of issue:** 2009-12-01

Certification body for lifts and safety components  
Identification number: 0036

*S. Melzer*

Siegfried Melzer





Industrie Service

**Annex to the EC type-examination certificate  
no. AFV 015/6 dated 2009-12-01**

**1. Scope of Application**

1.1 Permissible total mass of car and rated load or counterweight in using one pair of safety gears, depends on the condition of the guide rail running surface

Max. tripping speed (m/s)	Condition of the running surface	Total mass (kg) min. - max.
3.7	oiled*	2073
3.3	oiled*	2073 - 6352
2.8	oiled*	2073 - 8045
10.6	dry	2073 - 5031
6.4	dry	2073 - 5619
5.2	dry	2073 - 7256
2.8	dry	2073 - 8045

\*HLP-oils according to DIN 51524, part 2 or oils with comparable characteristics

The total mass corresponding of the intermediate values of the maximum tripping speed can be determined through linear interpolation.

1.2 Maximum tripping speed of overspeed governor and range of the maximum rated speed

Maximum tripping speed (m/s)	2.8	3.3	3.7	5.2	6.4	10.6
Range of the maximum rated speed (m/s)	2.24 - 2.43	2.64 - 2.87	3.0 - 3.2	4.16 - 4.52	5.12 - 5.57	8.45 - 9.22

1.3 Guide rails to be used

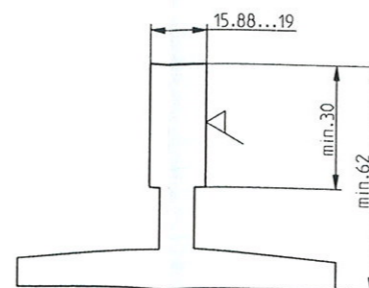
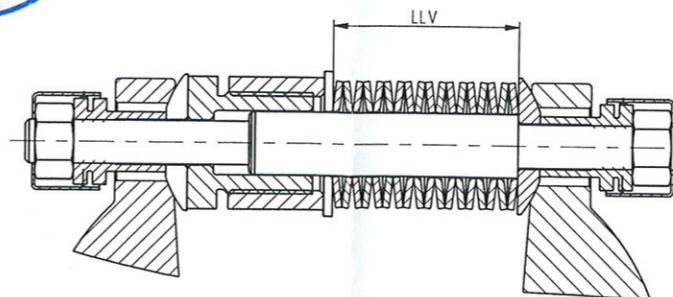
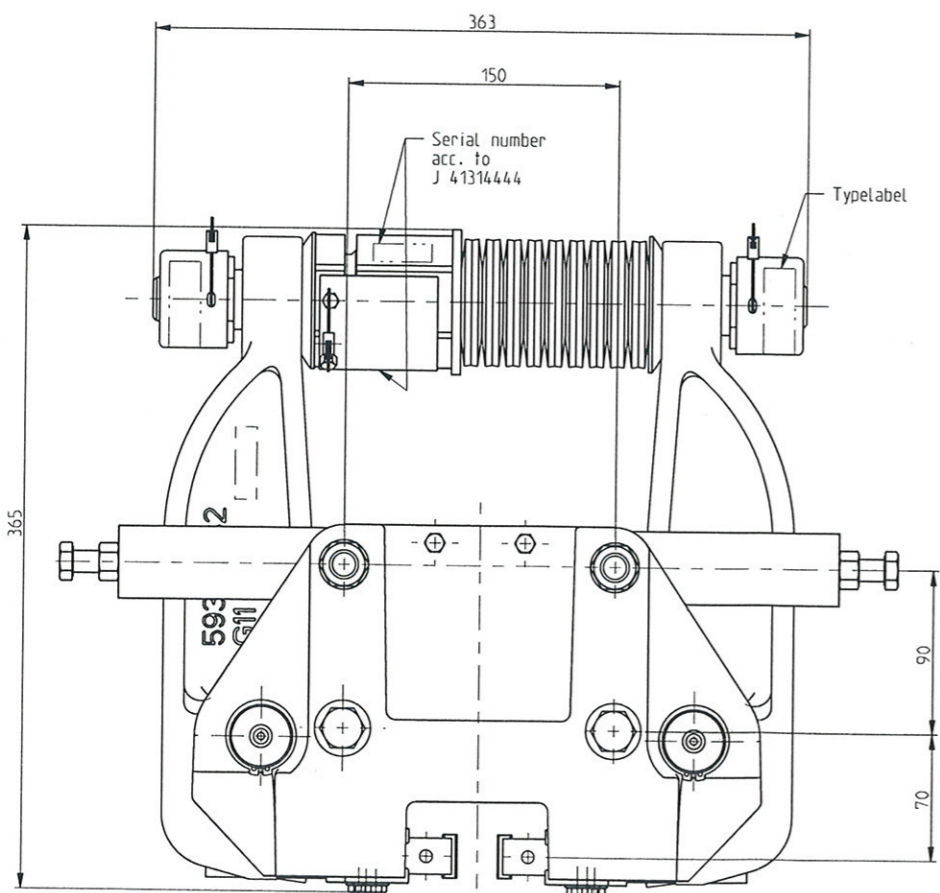
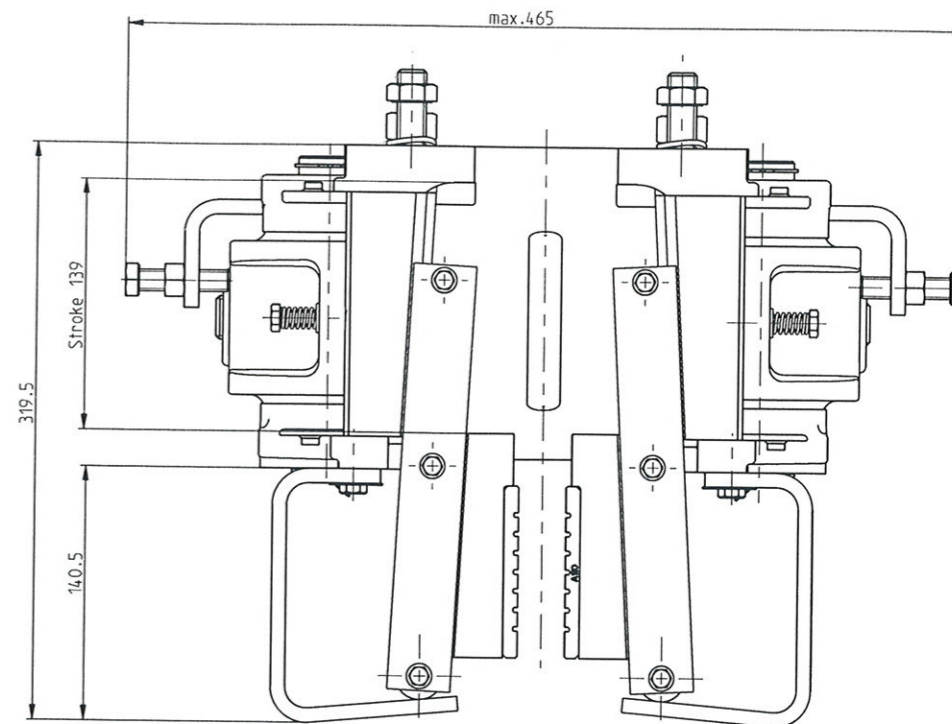
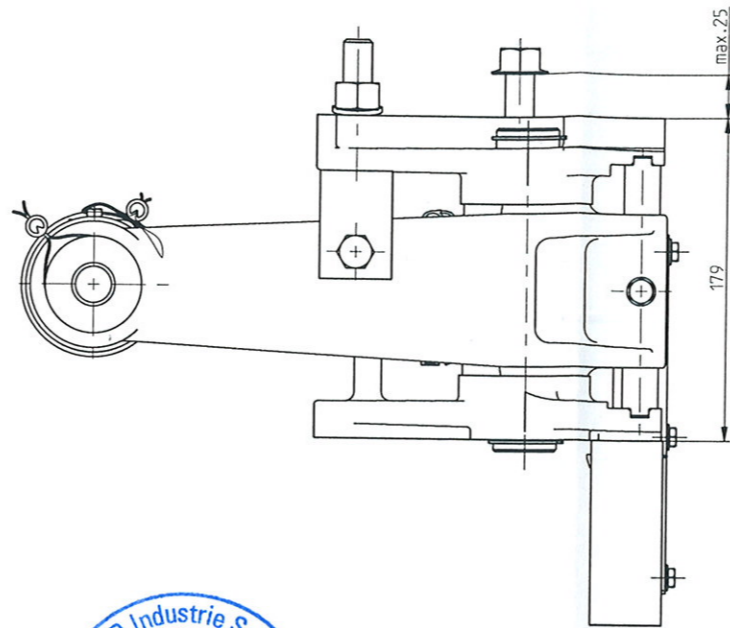
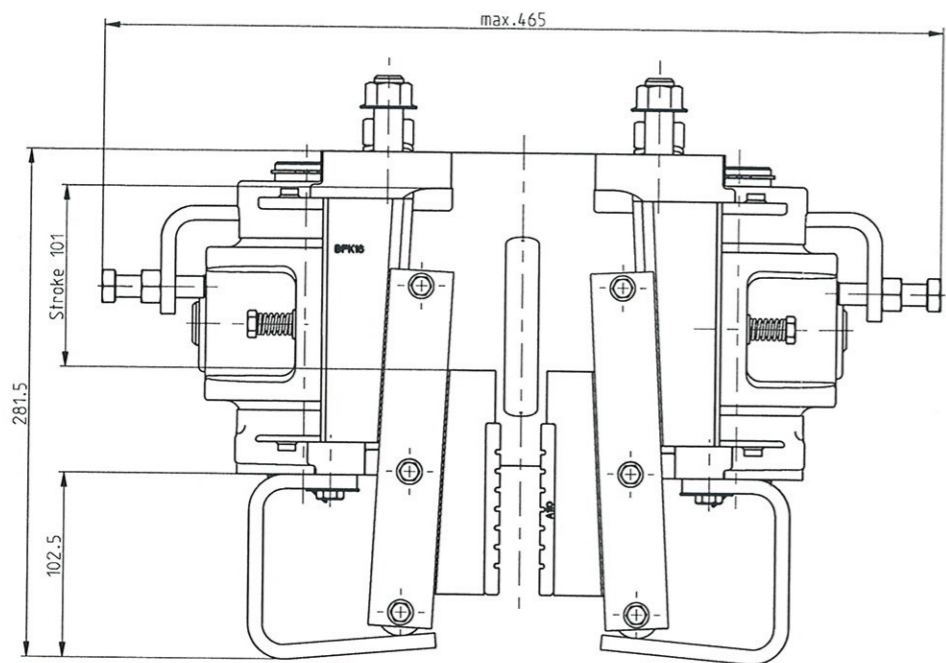
- 1.3.1 Running surface manufactured by machined
- 1.3.2 Minimum running surface width 30 mm
- 1.3.3 Blade width 15.88 - 19 mm

**2. Remarks**

- 2.1 Pursuant to the standard EN 81, annex F, paragraph 3, section 3.4.a) 2) the total mass determined for adjustment purposes may be 7.5 % higher or lower.
- 2.2 In order to provide identification and information about the basic design and its functioning, drawing No. M\_\_103772 with revision state Ae0 is to be enclosed with the EC type-examination certificate and the Annex thereto. The environmental conditions and connection requirements of the safety gear are presented or described in separate documents (e. g. installation instructions).
- 2.3 The EC type-examination certificate may only be used in connection with the pertinent annex.

S = 3mm

S = 5mm



**- GEPRÜFT -**  
 TÜV SÜD Industrie Service GmbH  
 Zentralbereich Fördertechnik-Sonderbauten  
 Abteilung Aufzüge und Sicherheitsbauteile  
 Westendstr. 199, D-80686 München  
 Der Sachverständige

- 1. Dez. 2009

This presentation is our intellectual property. Without our written consent, it shall neither be copied in any manner, nor used for manufacturing, nor communicated to third parties.  
 Diese Darstellung ist unser geistiges Eigentum. Sie darf ohne unsere schriftliche Zustimmung weder irgendwie kopiert noch zur Anfertigung des Werkes gebraucht oder Dritten bekanntgegeben werden.  
 Cet ouvrage est notre propriété intellectuelle. Sans notre autorisation écrite, il ne doit être ni copié d'une manière quelconque, ni être utilisé pour la fabrication, ni non plus être communiqué à des tiers.

Ident. No.	Serial finished product / raw material	Serial fin. (cont. No.)	Item	Code surface	Heat treatment	Draw. / Prod. No.	Weight
108321						55.00	
Modifikation			Ac0	Draw Ver.	Prepared	2009-11-04	Dr. Beyerle
AA No.			TS9015	13	Released	2009-11-04	Legerebe
AA Date			2009-12-23	Model Ver.	Released	2009-11-04	Legerebe
				17	Released		
Group: SAFETY				Remarks	Date	Name	
Dimensioned Drawing SA G 11				Scale	Prepared	2009-11-04	Dr. Beyerle
				1:2	Reviewed	2009-11-04	Legerebe
SA G 11				Page	Approved	2009-11-04	Legerebe
				1/1	Released	2009-11-04	Legerebe
INVENTIO AG CH-6052 Hergiswil		Classification	Lead Office				
		1154.0	EB3				
		Part A1	M...103772				
			EN				