



Industrie Service

EC TYPE-EXAMINATION CERTIFICATE

According to Annex V, Part A of 95/16/EC Directive

Certificate No.: AFV 806/3

Certification Body of the Notified Body: TÜV SÜD Industrie Service GmbH
Westendstr. 199
80686 Munich – Germany
Identification No. 0036

Certificate Holder: INVENTIO AG
Seestrasse 55
6052 Hergiswil – Switzerland

Manufacturer of the Test Sample: Schindler Drive Systems
Poligono “Empresarium”
Albardin, 58
50720 La Cartuja Baja – Zaragoza – Spain
(Manufacturer of Serial Production - see Enclosure)

Product: Progressive safety gear

Type: SA G 01
ID-Nr.: 59314900


Directive: 95/16/EC

Reference Standards: EN 81-20:2014
EN 81-50:2014
EN 81-1:1998+A3:2009
EN 81-2:1998+A3:2009

Test report: AFV 806/3 of 2015-07-31

Outcome: The safety component conforms to the essential health and safety requirements of the mentioned Directive as long as the requirements of the annex of this certificate are kept.

Date of Issue: 2015-08-03


Werner Rau

Certification Body “lifts and cranes”



**Annex to the EC type-examination certificate
no. AFV 806/3 dated 2015-08-03**



Industrie Service

1 Scope of application

1.1 Permissible total mass of car and rated load or counterweight in using one pair of safety gears, depends on the maximum tripping speed of overspeed governor

Maximum tripping speed (m/s)	Manufactured by and condition	Total mass (kg) min. - max.
1.47	machined / oiled*	1681 - 5288
6.00	machined / oiled*	1850 - 3887
5.90	machined / dry**	1714 - 4236
2.00	machined / dry**	4600

* HLP-oils according to DIN 51524, part 2 or oils with comparable characteristics

** or slightly oiled in corrosion prevention

The total mass corresponding of the intermediate values of the maximum tripping speed can be determined through linear interpolation.

1.2 Maximum tripping speed of overspeed governor and maximum rated speed

Max. tripping speed (m/s)	1.47	2.00	5.90	6.00
Range of max. rated speed (m/s)	0.97 – 1.28	1.46 – 1.74	4.68 – 5.13	4.76 – 5.22

1.3 Guide rails to be used

1.3.1 Minimum running surface width 30 mm

1.3.2 Blade width 10 - 16 mm

2 Conditions

2.1 For identification and information about the principal construction and operation and for demarcation of the examined and approved sample the identification drawing M _ _ 41314900 with certification stamp dated 2015-08-03 has to be enclosed to the EC type-examination certificate and its annex.

2.2 The EC type-examination certificate may only be used in connection with the pertinent annex and the enclosure (list of the manufacturers serial production). This enclosure shall be updated and re-edited following information of the certificate holder.

3 Remarks

3.1 Pursuant to the standard EN 81-50:2014, paragraph 5.3.4, the total mass of the progressive safety gear determined for adjustment purposes may be 7.5 % higher or lower.

3.2 This EC type-examination certificate is based modelled after and /or harmonized standards as following:

- EN 81-1:1998 + A3:2009 (D), Anhang F.3
- EN 81-2:1998 + A3:2009 (D), Anhang F.3
- EN 81-20:2014 (D), Punkt 5.6.2.1.1.2
- EN 81-50:2014 (D), Punkt 5.3

3.3 Changes resp. extensions of the upper mentioned standards or a further development of the state of the art may make a revision of this EC type-examination certificate necessary.

Note: The English text is a translation of the German original. In case of any discrepancy, the German version is valid only.

**Enclosure of EC type-examination certificate
no. AFV 806/3 dated 2015-08-03**



Industrie Service

Manufacturer serial production – production sites (Stated: 2015-08-03):

Company **Schindler Drive Systems**
Address Poligono “Empresarium”
 Albardin 58
 50720 La Cartuja Baja - Zaragoza – Spain

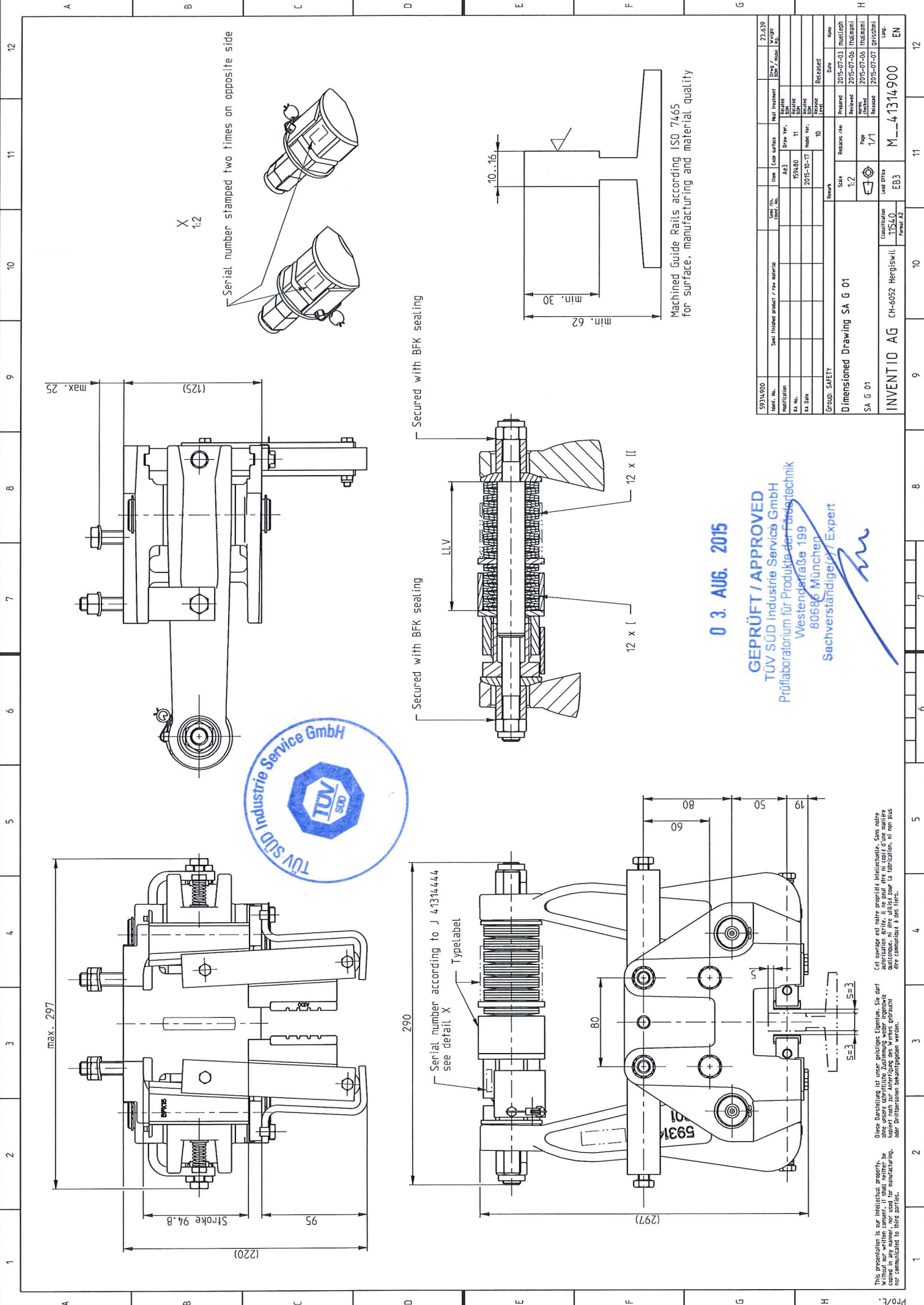
Company **Schindler (China) Elevator Co. Ltd.**
Address No. 818 Jin Men Road
 215004 Suzhou – P.R. China

Company **Elevadores Atlas Schindler S. A.**
Address R. Angelina Ricci Vezozzo, 3400
 86087 Londrina – Brasil

Company **Schindler Aufzüge AG**
Address EBI WORKS
 Zugerstrasse 13
 6030 Ebikon – Switzerland

- ENDE DOKUMENT -

Base: Letter of SCHINDLER Aufzüge AG dated 28.01.2015



max. 25

X
1:2

Serial number stamped two times on opposite side

Serial number according to J 41314444
see detail X
Typelabel

Secured with BFK sealing

Secured with BFK sealing

Machined Guide Rails according ISO 7465
for surface, manufacturing and material quality

0 3. AUG. 2015

GEPRÜFT / APPROVED
 TÜV SÜD Industrie Service GmbH
 Prüflaboratorium für Produktionstechnik
 Westendstraße 199
 80696 München
 Sachverständiger/Expert

This presentation is our intellectual property. Without our written consent, it shall neither be reproduced nor manufactured to third parties, nor communicated to third parties.
 Diese Darstellung ist unser geistiges Eigentum. Sie darf ohne unsere schriftliche Zustimmung weder reproduziert noch in irgendeiner Weise weitergegeben werden.
 Cet ouvrage est notre propriété intellectuelle. Sans notre autorisation écrite, il ne peut être ni copié d'une manière quelconque ni communiqué à des tiers.

Ident. No.	59314900	Serial number product / no. material	Serial No. (Int. No.)	File	Case surface	Next treatment	Drawn / Made	21.6.39
Modification				Ac3	Drawn Ver.	Next treatment	Drawn / Made	
MA No.				59A.00	11	Drawn Ver.	Drawn / Made	
MA Date				2015-10-17		Drawn Ver.	Drawn / Made	
Group: SAFETY						Drawn Ver.	Drawn / Made	
Scale	1:2					Drawn Ver.	Drawn / Made	
Revision	1/1					Drawn Ver.	Drawn / Made	
Lead office	EB3					Drawn Ver.	Drawn / Made	
Classification	T5L0					Drawn Ver.	Drawn / Made	
Formal No.	SA G 01					Drawn Ver.	Drawn / Made	
Lead office	EB3					Drawn Ver.	Drawn / Made	
Classification	CH-6052 Hergiswil					Drawn Ver.	Drawn / Made	
Formal No.	M_41314900					Drawn Ver.	Drawn / Made	
Lead office	EN					Drawn Ver.	Drawn / Made	