



Industrie Service

## EC type-examination certificate

**Certificate no.:** AFV 212/3

**Notified body:** TÜV SÜD Industrie Service GmbH  
Zertifizierungsstelle für Aufzüge und Sicherheitsbauteile  
Westendstraße 199, 80686 München - Germany

**Applicant/  
Certificate holder:** ThyssenKrupp Aufzugswerke GmbH  
Bernhäuser Str. 45  
73765 Neuhausen - Germany

**Date of submission:** 2007-09-11

**Manufacturer:** ThyssenKrupp Aufzugswerke GmbH  
Bernhäuser Str. 45  
73765 Neuhausen - Germany

**Product,  
type:** Progressive safety gear,  
6071/2

**Test Laboratory:** TÜV SÜD Industrie Service GmbH  
Abteilung Aufzüge und Sicherheitsbauteile  
Westendstrasse 199, 80686 München - Germany

**Date and  
Number of test report:** 2007-09-13  
212/3

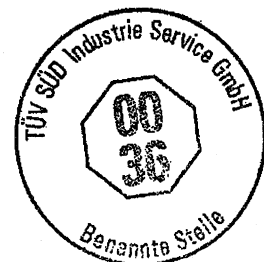
**EC-directive:** 95 / 16 / EG

**Statement:** The safety component conforms to the directive's safety re-  
quirements for the respective scope of application stated on  
page 1 of the annex to this EC type-examination certificate.

**Certificate date:** 2007-09-14

Zertifizierungsstelle für Aufzüge und Sicherheitsbauteile  
EC-Identification number: 0036

*Dieter Roas*  
Dieter Roas





Industrie Service

## Annex to the EC type-examination certificate No. AFV 212/3 dated 2007-09-14

### 1. Scope of Application

- 1.1 Permissible total mass of car and rated load or counterweight in using one pair of safety gears, depends on maximum tripping speed of the overspeed governor, manufacture and condition of the guide rail running surface

Max. tripping speed (m/s)	Manufactured by and Condition	Total mass (kg)	
		min.	max.
3,22	drawn oiled*	1770	4380
3,22	machined oiled*	3066	7110
5,06	machined dry	3600	5730

\*Mineral oils without additives (e. g. lubricating oils C according to DIN 51517 part 1)

- 1.2 Maximum tripping speed of overspeed governor and maximum rated speed

Maximum tripping speed (m/s)	3,22	5,06
Maximum rated speed (m/s)	2,80	4,40

- 1.3 Guide rails to be used

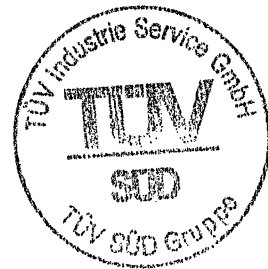
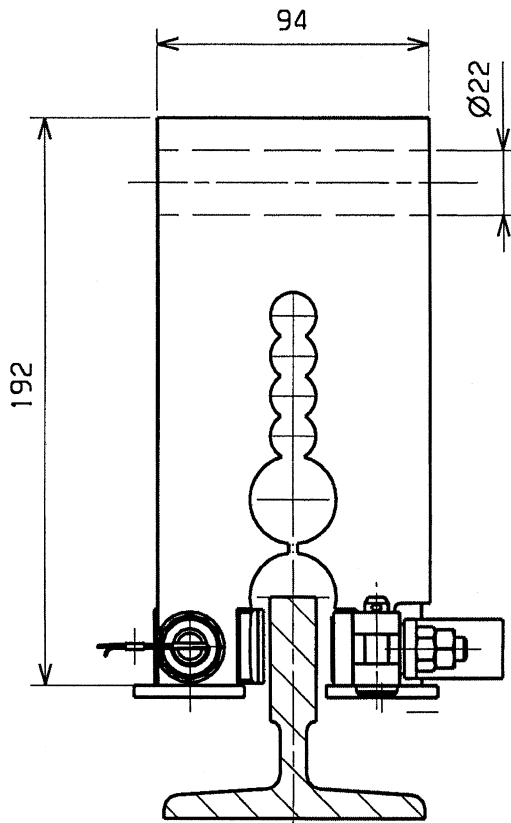
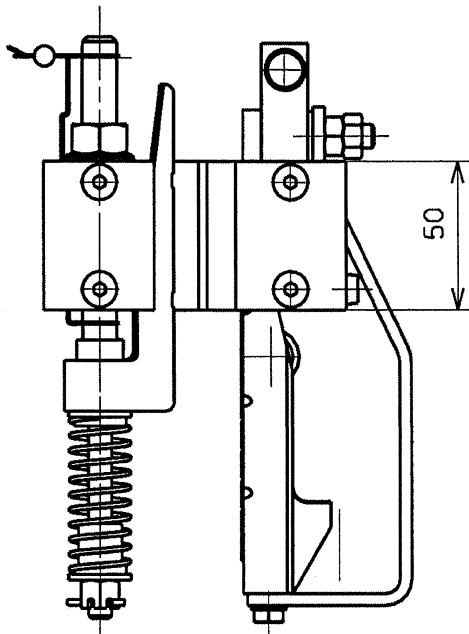
- 1.3.1 Minimum running surface width 28 mm
- 1.3.2 Blade width 9 - 19 mm

### 2 Conditions

Values of adjustment  $\geq 229$  (according type plate) and blade width of guide rail 16 - 19 mm it is allowed to use forged wedges only (detectable by the silver-grey colour and the stamped manufacturing date).

### 3. Remarks

- 3.1 Pursuant to the standard DIN EN 81, annex F, paragraph 3, section 3.4. a) 2) the total mass determined for adjustment purposes may be 7,5 % higher or lower.
- 3.2 In order to provide identification, information about the basic design and its functioning and to show which parts have been tested pertaining to the tested an approved type, drawing no. 60 710 76 00 0 dated 13 October 2004 is to be enclosed with the EC type-examination certificate and the Annex thereto. The environmental conditions and connection requirements of the safety gear are presented or described in separate documents (e. g. operating instructions).
- 3.3 The EC type-examination certificate may only be used in connection with the pertinent annex.
- 3.4 This EC type-examination certificate with number 212/3 will replace the EC type-examination certificate number AFV 212/1 dated 1998-03-31 and EC type-examination certificate number AFV 212/2 dated 2004-10-20.



20. OKT. 2004

- GEPRÜFT -  
 TÜV Industrie Service GmbH  
 TÜV SÜD Gruppe  
 Abteilung Aufzüge und Sicherheitsbauteile  
 Westendstr. 194, D-80638 München  
 Der Sachverständige

*Handwritten signature*

Sicherheitsbauteil  
 Safety device

Bremsfangvorrichtung L - Ausführung  
 Rechtsausführung spiegelbildlich  
 Progressive safety gear l.h. version  
 r.h.version mirrored

ThyssenKrupp



ThyssenKrupp Aufzugswerke

Ein Unternehmen von  
 ThyssenKrupp Elevator

SD Nr. / SD Pos.	
SD no. / SD pos.	/
Kennwort project name	
Equipmentnr. equipment no.	

Version  
00

Werkstoff / Material	Datum/date	Name/name
	Bearb. 13. 10. 04	SCHNEIDER. MA
	Gepr. 13. 10. 04	J. Müller

Schutzvermerk ISO 15016 beachten / copyright reserved		Maßstab/scale
Materialnr. / Material no.		1:2,5
60 710 76 00 0		Format A4
Materialbenennung / Material description		
Bremsfangvorrichtung 6071/2		
Progressive safety gear 6071/2		
Dokumentnr. Document no.	6071076000	Teildokument Docu. part 000
Dokumentbenennung Document description		
Bremsfangvorrichtung 6071_2		